

EAPM 2015

Challenges and Chances for Psychosomatic Medicine in Health Care

PROGRAM



1st – 4th July, 2015 | Nuremberg, Germany

Welcome & Greetings	page 4
Sponsors & Supporters	page 11
Committees	page 12
Venue	page 13
Map of the Location	page 14
Program	
Wednesday July 1 st , 2015	page 17
Thursday July 2 nd , 2015	page 21
Friday July 3 rd , 2015	page 37
Saturday July 4 th , 2015	page 55
Poster Sessions	
Thursday July 2 nd , 2015: Poster Session 1	page 60
Saturday July 4 th , 2015: Poster Session 2	page 68
Carus Master Classes, Clinical Courses & Workshops	
Carus Master Classes	page 76
Clinical Courses	page 78
Workshops	page 80
Accompanying Events	
Special Lectures	page 85
Get Together	page 86
Conference Dinner	page 86
General Information	
General Information	page 87
Information for presenters	page 90
Accreditation	page 91
Information on Nuremberg	page 92
Notes	page 95
Index	page 100

WELCOME OF THE CONFERENCE PRESIDENT / PRESIDENT OF THE EAPM

Dear colleagues,

Welcome to the third annual scientific conference of the European Association of Psychosomatic Medicine!

This conference is the successor meeting of the European Conference on Psychosomatic Research (founded in 1954) and the Annual Scientific Meeting of the European Association of Consultation-Liaison Psychiatry and Psychosomatics. After the unification of these two European organisations, the annual scientific conference of the EAPM started in 2013 in Cambridge, England, followed by the 2014 conference in Sibiu, Romania.

The growing numbers of participants and submission of abstracts show the increasing interest in our scientific field. It also reflects the growth of our association. The conference brings together an international, multi-professional line up of about 500 health care professionals to explore the latest advances in psychosomatic medicine and C-L psychiatry.

The motto of this year's conference is Challenges and Chances for Psychosomatic Medicine. All four main topics, communication in health care, integrated and collaborative care, brain-immune interaction and the use of new media in psychotherapy with the medically ill reflect the interdisciplinary and interprofessional challenges and chances of Psychosomatic Medicine in research, education, and patient care. We are proud that so many excellent researchers followed our invitation to present their work.

Together with the Academy of Psychosomatic Medicine (APM), we organized a joint pre-conference for the second time. We continue this tradition with the topic "The Art and Science of Communication in Health Care". We are very sad that one of the 'fathers' of the close co-operation between APM and EAPM, Wayne Katon, cannot be with us. He died recently from lymphoma. Wayne was a strong supporter of the transatlantic co-operation and actively took part in so many previous European conferences. We dedicate this conference to Wayne Katon.

Organising this conference in Nuremberg obliges to remember the specific history of Nuremberg and its importance for medicine, ethics, and humanity. The Nuremberg trials called the main Nazi criminals to account. In particular, the trial against Nazi physicians resulted in the 'Nuremberg Code' and in an increased attention in medical ethics. By organizing special lectures in the historic courtyard 600 we pay respect to this history.

Finally, we are happy to present two new scientific awards: The Alison Creed Award for the lifetime achievement in Psychosomatic Medicine and C-L Psychiatry, and the Young Researchers' Award sponsored by Elsevier. The Frits Huyse Award will be presented at this conference for the second time. I'm very grateful for the sponsors and I'm very much looking forward to the lectures of the awardees.

I wish you an interesting conference with vivid discussions and interesting encounters



Wolfgang Söllner
Congress President & President of EAPM



WORDS OF GREETING BY THE LORDMAYOR OF NUREMBERG

The city of Nuremberg welcomes all participants of 3rd Annual Scientific Conference of the European Association of Psychosomatic Medicine!

Nuremberg is the second largest city of Bavaria, a modern industrial town with well known universities and colleges of advanced technology. The rich history is well represented in the city's architecture, its museums and exhibitions. In medieval times, Nuremberg was one of the most important cultural centres in Middle Europe, a city where the Roman Catholic German emperors resided and Dürer brought renaissance art to Germany.

However, it is also the city of the Reichsparteitag of the Nazi regime and the city of the Nuremberg trials. Nuremberg has taken up this historic challenge and set up a documentation center on the crimes of Nazism and the Memorium of the Nuremberg trials. Nuremberg feels committed to the human rights in a particular way.

In 1993, Nuremberg founded the "International Human Rights Award. The award is intended to contribute to the protection of endangered human rights defenders and to encourage others to commit themselves to human rights. It is presented every two years to individuals or groups who have, in an exemplary manner, committed themselves to human rights, sometimes at considerable personal risk.

In the same year, the 'Way of Human Rights' was presented to the public. Each of its pillars is inscribed with a short version of one of the 30 articles of the "Universal Declaration of Human Rights" of 1948. The work of art created by the Israeli artist, Dani Karavan, reminds us of the darkest chapters of German and Nuremberg history, but at the same time also symbolises the victory of humanity over barbarism and nurtures hopes of a world where all people may live in dignity, peace and freedom. The "Memorium Nuremberg Trials" points to Nuremberg as the venue of one of the milestones of international law: at the historic site, it provides information about the history, the course and the repercussions of the International Military Tribunal which tried the leading representatives of the Nazi regime.

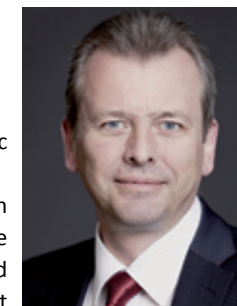
Especially against the background of the German history, the development and advancement of a medical practice, which combines knowledge and respect for the physical and the psychosocial aspects of health and disease seems of the highest priority.

I'm very glad that the annual conference of the EAPM takes place in Nuremberg. The Nuremberg General Hospital was one of the first German hospitals to install a Department of Psychosomatic Medicine which offers psychosomatic liaison services for all medical and surgical departments. This allows a better support of severely ill patients in our city. It has received wide recognition in Germany and abroad and is called 'the Nuremberg model of integrated psychosomatic care' and fits to the humanistic guidelines adopted by the city council with the motto of "Nuremberg – City of Peace and Human Rights".

I hope you enjoy the conference and your stay in Nuremberg.



Dr. Ulrich Maly



WELCOME OF THE VICE-DEAN OF THE PARACELSUS MEDICAL UNIVERSITY NUREMBERG

Dear colleagues,

As the Paracelsus Medical University (PMU) we are looking forward to welcoming the European Association of Psychosomatic Medicine in Nürnberg.



The PMU Nürnberg was founded last year as a cooperation between the PMU Salzburg Austria and the General Hospital Nuremberg. Our first class began their studies in September 2014 and we are very happy to be able to contribute to the study of medicine in Germany. This small private university allows the General Hospital Nuremberg – after all, one of the largest general hospitals in Europe – to become even more engaged in research. Our program emphasizes not only early hands on training in the clinics but also extensive research already during medical school.

International conferences like the annual meeting of the EAPM show how continuing inquisitive research is necessary and crucial in medicine. The exchange of ideas and findings stimulate new ones and are fundamental for continued advancement in medical treatment. Some of the new findings at this conference may well find their way into medical school lecture halls soon. We at the PMU, on the other hand, will work on educating future professionals to join your lines at future conferences.

We wish the annual meeting of the EAPM 2015 a successful and innovative conference.

Yours sincerely

Martin Wilhelm

Vice-Dean Research / Paracelsus Medical University Nuremberg



WELCOME OF THE CHAIR OF THE GENERAL HOSPITAL NUREMBERG

The Nuremberg Hospital with about 2400 beds is one of the largest municipal hospitals in Europe, offering first-class diagnostic and therapeutic medicine. With 38 specialist departments, one of it being the clinic for psychosomatic medicine, with two locations, one in the north and one in the south of the city, and with its staff of 5,200, Nuremberg Hospital is the biggest health service provider of the Nuremberg Metropolitan Region.



In 1980, the department of Psychosomatic Medicine and Psychotherapy was founded - one of the first psychosomatic departments in a general hospitals in Germany. Regarded as a 'strange flower' by many physicians in the first years after its foundation, the psychosomatic department established itself as a necessary and indispensable partner for every medical discipline in the treatment of chronic and severe diseases. From the beginning, the department focused on the liaison approach of co-operation with all medical and surgical departments. Patients, their relatives and the medical staff view the psychosomatic specialists as members of the different medical teams and not as 'strangers'. This contributes to enhance a bio-psycho-social view of illness and medical treatment in patients and health care providers.

In addition, the Department of Psychosomatic Medicine runs an in-patient ward and a day hospital for the treatment of psychosomatic disorders. It participates in three interdisciplinary units, the Geriatric day hospital, the Pain day hospital, and the Med-Psych Unit. This co-operation allows to integrating psychosomatic diagnosis and therapy in the treatment of severely medically ill patients. However, the activity of psychosomaticists is not only important for patient care but also for team collaboration and work satisfaction of health care staff. The psychosomatic liaison specialists support medical teams in emotionally burdensome situations and in difficult ethical decisions. Since more than 10 years, the department of Psychosomatic Medicine organises communication skills trainings for medical staff. More than 250 physicians participated in these courses so far. Three months after this training, participants felt more competent in communication skills but also expressed more satisfaction with work.

Our patients place their trust in the medical and care services as well as in the innovative medical technology we provide. Thus, it is extremely important to us that our specialists work hand in hand across medical disciplines and build interdisciplinary medical networks. Models of collaborative and integrative care as well as training of communication skills, as it is part of the program of the EAPM 2015 conference, guarantees the best medical treatment for our patients.

Dr. Alfred Estelmann

Chair



WELCOME OF THE PRESIDENT OF THE GERMAN COLLEGE OF PSYCHOSOMATIC MEDICINE

Dear colleagues,

On behalf of the German College of Psychosomatic Medicine (DKPM) a very warm welcome to the third annual conference of the European Association of Psychosomatic Medicine (EAPM) 2015 entitled *“Challenges and Chances for Psychosomatic Medicine in Health Care”*. Wolfgang Söllner and his colleagues are to be congratulated for bringing together international experts in our field from Europe and overseas at this excellent meeting in Nuremberg, a place with a long tradition of psychosomatic medicine!



Over the last years the DKPM and the EAPM have established a close collaboration, starting with cutting edge EAPM lectures at the annual German conference of Psychosomatic Medicine in Berlin, this year held by Prof Michael Sharpe (Oxford, UK) and Prof Peter White (London, UK).

We are particularly delighted to jointly organize Carus master classes at EAPM and DKPM meetings having the common goal to provide colleagues who have taken part in both formats with an European EAPM/DKPM Carus master class certificate.

The DKPM wishes all participants a highly interesting and fruitful conference, uniting colleagues from different countries, different health care systems and different professional backgrounds but all dedicated to the future of psychosomatic medicine.

Yours sincerely

Stephan Zipfel
President of the DKPM



WELCOME OF THE PRESIDENT OF THE GERMAN ASSOCIATION FOR PSYCHOSOMATIC MEDICINE AND PSYCHOTHERAPY

Dear colleagues,

On behalf of the German Association for Psychosomatic Medicine and Psychotherapy (DGPM) I cordially welcome you to the 3rd Annual Conference of the European Association of Psychosomatic Medicine (EAPM). We are delighted that Wolfgang Söllner and his colleagues succeeded in organizing this excellent congress with numerous notable international experts in Nuremberg. Congratulations to the team!



Over the past decades a rich and comprehensive psychosomatic “care landscape” has emerged in Germany. About 200 psychosomatic departments and 160 psychosomatic rehabilitation clinics offer inpatient treatment for more than 200.000 patients with psychosomatic disorders per year. Psychosomatic medicine is also strongly present in outpatient care. More than 4.000 physicians are specialized in psychosomatic medicine and psychotherapy, 13.000 physicians of different specialties have an additional qualification in psychotherapy, and 35.000 general practitioners received an intensive training in basic psychosomatic healthcare. Together with psychiatrists and psychological psychotherapists they provide care for patients with mental and psychosomatic disorders. Every year more than 1 million people receive psychotherapy, often lasting longer than 25 sessions.

Only last month the German Medical Association has emphasized the importance of this sophisticated and differentiated psychosomatic care for the medical profession and the health care system in general. Thus, psychosomatic medicine has arrived to become an integral part of the whole range of medical care in Germany.

In light of the above we are very much looking forward to a lively dialogue with international experts. Hereby, the search for innovative and evidence based forms of psychosomatic care will be a main focus. I am firmly convinced that this dialogue will show new ways and perspectives for the field of psychosomatic medicine – in Germany and beyond.

Nuremberg with its psychosomatic tradition and beautiful locations will provide an excellent ambience for our purpose.

I wish us all a lively exchange of ideas and eventful days.

Yours sincerely

Johannes Kruse
President of the DGPM



WELCOME OF THE PRESIDENT OF THE ACADEMY OF PSYCHOSOMATIC MEDICINE (USA)

We would like to welcome attendees to the joint APM-EAPM pre-conference day that is scheduled for July 1, 2015 in Nuremberg, Germany. This directly precedes that start of the EAPM conference and is the second joint collaborative meeting between our sister organizations. The first was held in July 2013 in Cambridge, England and focused on international perspectives on integrated and collaborative care. Speakers included experts on the subject including: Michael Sharpe, Jurgen Unutzer, Carsten Leue, Christoph Herrmann-Lingen, Simon Gilbody, and our beloved Wayne Katon, former APM President. For those who are not aware, Dr. Katon recently passed away and we hope to honor his spirit of intellectual curiosity, collegiality, and devotion to enhancing patient care in July. This year's APM-EAPM conference is focused on the theme of "The Art and Science of Communication in Healthcare" and will include speakers from both of our organizations. The theme echoes that of the upcoming annual APM meeting in New Orleans in November 2015 where we will continue to foster communication about research and clinical experiences in Psychosomatic Medicine from both a national and international perspective.



Cathy Crone
 Cathy Crone
 President of the APM



WE LIKE TO THANK ALL OUR PARTNERS FOR THEIR SUPPORT!

GOLD SPONSOR



SILVER SPONSORS



SPECIAL SPONSORS



The **Deutsche Forschungsgemeinschaft (German Research Foundation)** supports EAPM 2015.



Carl Gustav Carus Stiftung für psychosomatische Forschung supports the EAPM 2015 Masterclasses.



LOCAL ORGANIZING COMMITTEE

Wolfgang Söllner, Nuremberg, Germany
 Barbara Stein, Nuremberg, Germany
 Lisa Kristin Meyer, Nuremberg, Germany

SCIENTIFIC COMMITTEE

Philip A. Bialer, New York, USA
 Silvia Ferrari, Modena, Italy
 Franziska Geiser, Bonn, Germany
 Peter Henningsen, Munich, Germany
 Monika Keller, Heidelberg, Germany
 Albert Leentjens, Maastricht, The Netherlands
 Carsten Leue, Maastricht, The Netherlands

EXTENDED SCIENTIFIC COMMITTEE

Margarita Beresnavaitė, Kaunas, Lithuania
 Alexandre Berney, Lausanne, Switzerland
 Manfred Beutel, Mainz, Germany
 Annette Boenink, Amsterdam, The Netherlands
 Antonio Bulbena, Barcelona, Spain
 Graca Cardoso, Lisboa, Portugal
 Silla Consoli, Paris, France
 Catherine Crone, Washington DC, USA
 Hans-Christian Deter, Berlin, Germany
 Dan Dumitrascu, Cluj, Romania
 Per Fink, Aarhus, Denmark
 Javier Garcia-Campayo, Zaragoza, Spain
 Gabor Gazdag, Budapest, Hungary

Harald Gündel, Ulm, Germany
 Elspeth Guthrie, Manchester, UK
 Thomas Hyphantis, Ioannina, Greece
 Josef Jenewein, Zürich, Switzerland
 Roger Kathol, Minneapolis/Brunsville, USA
 Johannes Kruse, Giessen, Germany
 Wolf Langewitz, Basel, Switzerland
 Jim Levenson, Richmond, VA, USA
 Ulrik Malt, Oslo, Norway
 Gabriele Moser, Vienna, Austria
 Istvan Mucsi, Toronto, Canada
 Günter Niklewski, Nuremberg, Germany
 Marta Novak, Budapest, Hungary/
 Toronto, Canada
 Kristina Orth-Gomer, Stockholm, Sweden
 Charlotte Rask, Aarhus, Denmark
 Joanna Rymaszewska, Wroclaw, Poland
 Christian Schubert, Innsbruck, Austria
 Gerhard Schüssler, Innsbruck, Austria
 Fritz Stiefel, Lausanne, Switzerland
 Lucia Tomas-Aragones, Zaragoza, Spain
 Ramiro Verissimo, Porto, Portugal
 Ursula Werneke, Lulea, Sweden
 Peter White, London, UK
 Thomas Wise, Washington DC, USA
 Stephan Zipfel, Tübingen, Germany

CONGRESS MANAGEMENT

pdI congressmanagement - EAPM 2015
 Andreas-Hofer-Str. 6 EG
 6020 Innsbruck, Austria
 Tel :+43 (0) 512 567303
 Fax: +43 (0) 512 567303 55
 Email: eapm2015@congressinfo.net
 Web: www.eapm2015.com

MEISTERSINGERHALLE NUREMBERG

When Nuremberg had recovered from the destruction and commotion of the Second World War, and the basic needs were satisfied, the necessity for a place for culture and music grew bigger and bigger.

The building of the Meistersingerhalle began 1960, the official inauguration took place on September 7, 1963. The Nuremberg City Council named the new concert hall after Richard Wagner's opera „Die Meistersinger von Nürnberg“.

Nuremberg was delighted by its new Meistersingerhalle, since it was one of the most modern, most sophisticated and progressive concert halls in Europe at that time. It really was the centre for musical, cultural and social events.

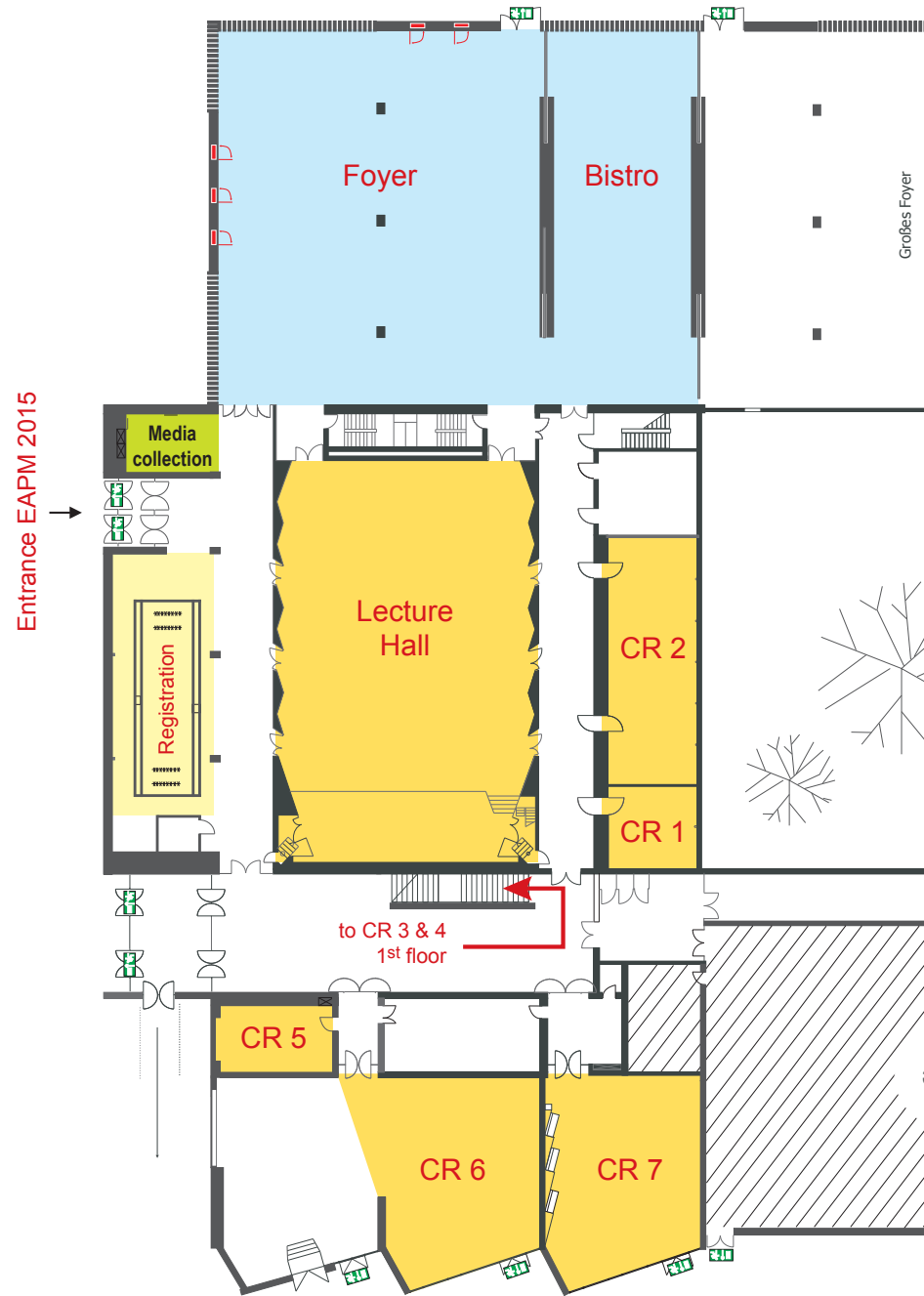
Today, the program of the Meistersingerhalle is manifold: classical concerts, rock and pop shows, musicals, celebrations, exhibitions and conferences (like the EAPM 2015 conference) take place in the rooms and halls of the imposing building. Approximately 340.000 visitors enjoy around 800 events during the year. Finally, the Meistersingerhalle is stated as a class listed monument of the 60's architecture since 2007.

EAPM 2015 hopes you will enjoy the 60's peachiness of the venue!

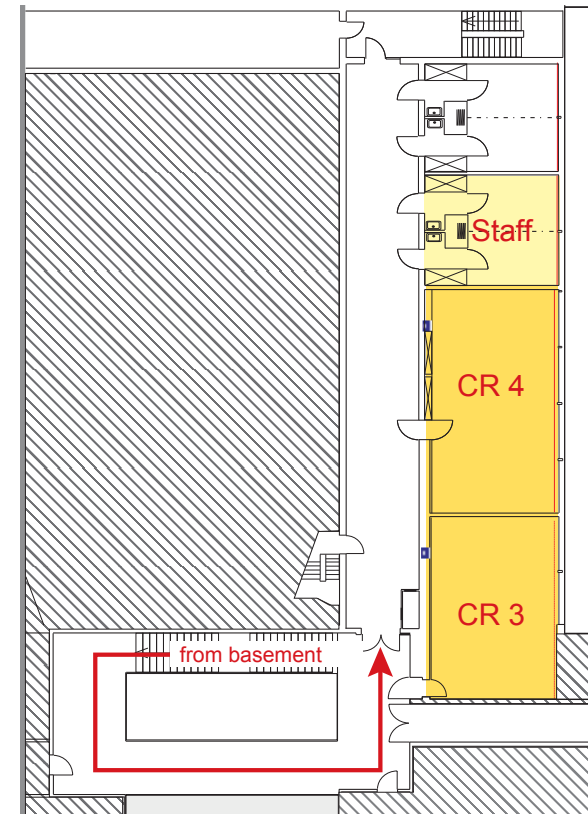


Address

Meistersingerhalle
 Münchener Straße 21
 90478 Nürnberg



CR...Conference room



- Lecture Hall** All Plenary Sessions
- Conference rooms 1-7** Classes, Courses, Scientific Symposia, Workshops and Meetings
- Media collection** Central check-in for all presentations
- Foyer** Area for breaks, exhibition and poster sessions
- Bistro** Place for relaxing and discussion

TIME	WEDNESDAY JULY 1	THURSDAY JULY 2	FRIDAY JULY 3	SATURDAY JULY 4	
08:00					
08:30			Morning Sessions		
09:00	Pre-Conference Plenary	Carus Master Classes & Clinical Courses	Plenary	Plenary	
09:30					
10:00					
10:30		Carus Master Classes & Clinical Courses		Postersession 2	
11:00	Pre-Conference Plenary		Lunch Sessions	Parallel Symposia	Plenary
11:30					
12:00					
12:30		Opening Session	Lunch Sessions	Closing Ceremony	
13:00		Plenary			
13:30	Pre-Conference Plenary			Plenary	Consensus Meeting
14:00					
14:30					
15:00		Parallel Symposia	Parallel Symposia		
15:30	Pre-Conference Plenary				
16:00					
16:30					
17:00	Get Together	Postersession 1			
17:30		Parallel Symposia	Parallel Symposia		
18:00					
18:30					
19:00	Special Lecture Memorium	Get Together			
19:30			General Assemblies	Conference Dinner	
20:00					
20:30					
21:00					

Program

Wednesday July 1st, 2015



EAPM
The European Association of Psychosomatic Medicine



Joint APM/EAPM Scientific Meeting

organized by the Academy of Psychosomatic Medicine (APM, USA) and the European Association of Psychosomatic Medicine (EAPM)

The Art and Science of Communication in Health Care

TIME	Conference Room 6
08:00	REGISTRATION FOR THE MEETING
09:00	Communicating with patients with serious medical illness and their treatment teams: lessons learned from the trenches (C. Crone, Washington DC, USA) General rules and creativity in clinical communication about medically unexplained symptoms (P. Salmon, Liverpool, UK)
10:30	Communication skills in models of collaborative care (J. Unützer, Seattle, USA) Discussant (T. Wise, Washington DC, USA)
12:30	Lunch Break
13:30	The multicenter KOMPASS study – Results and consequences for clinical practice (M. Keller, Heidelberg, DE) Experiences with training physicians at the Sloan Kettering Cancer Center (P. Bialer, New York, USA)
15:00	
15:30	20 years research on communication skills training for physicians – What is the lesson to learn? (W. Langewitz, Basel, CH) Discussant and closing remarks (F. Stiefel, Lausanne, CH)
17:00	Get Together in Meistersingerhalle
18:00	
18:15	Bus transfer from the Conference Venue Meistersingerhalle to the Memorium
19:00	Anatomy of Malice: the Rorschach tests of the Nuremberg War Criminals (J. Dimsdale, San Diego, USA) The Nuremberg Medical Trials – Lessons to be learned (K.H. Leven, Erlangen/Nuremberg, DE)
21:00	

Plenary Lectures
Special Lecture

Accompanying Events

9:00 – 10:30	Pre-Conference Plenary	Conference Room 6
		Chair: T. Wise (Washington DC, USA), W. Söllner (Nuremberg, Germany)
		Introduction C. Crone (Washington DC, USA), W. Söllner (Nuremberg, Germany)
		Communicating with patients with serious medical illness and their treatment teams: lessons learned from the trenches C. Crone (Washington DC, USA)
		General rules and creativity in clinical communication about medically unexplained symptoms P. Salmon (Liverpool, UK)
11:00 – 12:30	Pre-Conference Plenary	Conference Room 6
		Chair: T. Wise (Washington DC, USA), W. Söllner (Nuremberg, Germany)
		Communication skills in models of collaborative care J. Unützer (Seattle, USA)
		Discussant: T. Wise (Washington DC, USA)
12:30 – 13:30	Lunch Break (see p. 87)	Foyer
13:30 – 15:00	Pre-Conference Plenary	Conference Room 6
		Chair: C. Crone (Washington DC, USA), F. Stiefel (Lausanne, Switzerland)
		The multicenter KOMPASS study – Results and consequences for clinical practice M. Keller (Heidelberg, Germany)
		Experiences with training physicians at the Sloan Kettering Cancer Center P. Bialer (New York, USA)
15:30 – 17:00	Pre-Conference Plenary	Conference Room 6
		Chair: C. Crone (Washington DC, USA), F. Stiefel (Lausanne, Switzerland)
		20 years research on communication skills training for physicians – What is the lesson to learn? W. Langewitz (Basel, Switzerland)
		Discussant and closing remarks: F. Stiefel (Lausanne, Switzerland)

17:00 – 18:00 **Accompanying Events** Conference Room 6

Get Together in Meistersingerhalle

18:15 **Bus Transfer**

Bus transfer from the Conference Venue Meistersingerhalle to the Memorium (included) (approx. 30 min.)

19:00 – 20:30 **Special Lecture** Historic Court Yard

Special Lectures in the Historic Court Yard 600

Venue: Memorium Nuremberg Trials, Bärenschanzstraße 72, 90429 Nürnberg

Chair: W. Söllner (Nuremberg, Germany)

Greeting: C. Strötz, President of the Higher Regional Court
 Florian Dierl, Director Documentation Centre Nazi Party Rally Grounds and
 Memorium Nuremberg Trials



Anatomy of Malice: the Rorschach Tests of the Nuremberg War Criminals
J. Dimsdale (San Diego, USA)



The Nuremberg Medical Trials – Lessons to be learned
K.H. Leven (Erlangen/Nuremberg, Germany)

Special: Introduction by H. Claussen and visit of the Memorium exhibition after the lectures
 For detailed information see p. 83

**Program
 Thursday July 2nd, 2015**

EAPM 2015

**Challenges and Chances
 for Psychosomatic Medicine in Health Care**

THEMATIC TRACKS	
SOM	Somatic Symptom Disorder/ Somatisation
NP	Neuropsychiatry
S/PNI	Stress/ Psychoneuroimmunology
COLL	Collaborative & Integrative Care
COM	Communication
EC	Early Career
PT	Psychotherapy
TM	Transplantation Medicine

TIME	Lecture Hall	Conference Room 1	Conference Room 2	Conference Room 3		Conference Room 4	Conference Room 6	Conference Room 7	Conference Room 5	TIME
08:00	REGISTRATION FOR THE MEETING					REGISTRATION FOR THE MEETING				08:00
08:30		p. 24	p. 24	p. 24		p. 24	p. 24	p. 25	p. 25	08:30
		EAPM	Master Class	Master Class		Master Class	Clinical Course	Clinical Course	Master Class	
		Executive Council Meeting	Collaborative Care	Somatic Symptoms		Neurobiological Research Methods	Short-term Therapy	Psycho-pharmacology	Integrative Care	
10:00										10:00
10:15		p. 24	p. 24	p. 24		p. 24	p. 24	p. 25	p. 25	10:15
		EAPM	Master Class	Master Class		Master Class	Clinical Course	Clinical Course	WORKSHOP	
		Advisory Board Meeting	<i>continued</i>	<i>continued</i>		<i>continued</i>	<i>continued</i>	<i>continued</i>	Family Therapy	
11:45		p. 25		p. 87					p. 87	11:45
		Primary Care	Lunch Break			Lunch Break				
12:30	p. 26									12:30
	Opening Session									
13:00	p. 26									13:00
	Integrative and Collaborative Care									
13:30										13:30
14:30	Coffee Break					Coffee Break				14:30
14:45	p. 27	p. 27	p. 28	p. 29		p. 29	p. 30	p. 30		14:45
	Somatic Symptom Disorder: Illness Mechanisms	HIV/AIDS	Stress Regulation in Type 2 Diabetes	Transplantation I		Chronic Pain	Collaborative Care	Communication Skills		
16:30	Coffee Break					Coffee Break				16:30
16:45				p. 60					p. 60	16:45
	Postersession 1 in the FOYER					Postersession 1 in the FOYER				
17:30	p. 31	p. 32	p. 32	p. 33		p. 33	p. 34	p. 35		17:30
	Somatic Symptom Disorder in Primary Care	Cultural Aspects of Illness Perceptions	Brain & Bowel	Transplantation II		Research from Early-Career	Psycho-Cardiology	Somatic Symptom Disorder in Children & Adolescents		
19:15				p. 35						19:15
19:30	Get Together in the FOYER									19:30
20:00						p. 35		p. 35		20:00
						DGPM Bayern Mitglieder-versammlung		EAPM General Assembly		
22:00										22:00

8:30 – 10:00 Meeting Conference Room 1

EAPM Executive Council Meeting (*Closed Session*)

10:15 – 11:45 Meeting Conference Room 1

EAPM Advisory Board Meeting (*Closed Session*)

8:30 – 11:45 Carus Master Class Conference Room 2

Research on Implementation and Outcome of Models of Collaborative Care

Chair: J. Unützer (Seattle, USA)

For detailed information see p. 76

8:30 – 11:45 Carus Master Class Conference Room 3

Symptoms Research in Psychosomatic Medicine - Conducting Practical Clinical Trials

Chair: K. Kroenke (Indianapolis, USA)

For detailed information see p. 76

8:30 – 11:45 Carus Master Class Conference Room 4

Neurobiological Research Methods in Psychosomatic Medicine: New Perspectives

Chairs: J. Rundell (Rochester, USA), U. Malt (Oslo, Norway), T. Elvsåshagen (Oslo, Norway)

For detailed information see p. 77

8:30 – 11:45 Clinical Course Conference Room 6

Intensive Short-term Dynamic Psychotherapy: An Introduction to the Method Demonstrated by Audiovisually-Recorded Interviews With a Patient With Somatization Disorder

Chair: I. Ostertag (Nuremberg, Germany)

For detailed information see p. 78

8:30 – 11:45 Clinical Course Conference Room 7

Update of Psychopharmacological Treatment of Medically Ill Patients

Chair: J. Levenson (Richmond, USA)

For detailed information see p. 79

8:30 – 10:00 Carus Master Class Conference Room 5

Stop Wasting Money!

How to Deploy Integrated Medical and Psychiatric Services with Clinical and Economic Value

R. Kathol (Minneapolis/Brunsville, USA), Ch. Lattimer (Little Rock, USA)

For detailed information see p. 77

10:15 – 11:45 Workshop Conference Room 5

Family Therapy for Adolescents with Functional Somatic Symptoms:

A Systemic Narrative Approach on a Biopsychosocial Foundation

Chair: G. Dehlholm (Odense, Denmark)

For detailed information see p. 79

11:45 – 12:30 EAPM Working Group Conference Room 1

Primary Care (*Open Session*)

Chair: A.F. Allaz (Geneve, Switzerland), H.C. Deter (Berlin, Germany)

11:45 – 12:30 Lunch Break (*see p. 87*) Foyer

12:30 – 13:00

Opening Session

Lecture Hall

Opening Session

Conference President: *W. Söllner (Nuremberg, Germany)*

Greetings

P. Pluschke (Counsellor for Health and Environment of the City of Nuremberg, Germany)

M. Wilhelm (Vice-Dean Research, Paracelsus Medical University Nuremberg, Germany)

A. Estelmann (Chair, General Hospital Nuremberg, Germany)

13:00 – 14:30

Plenary Lecture

Lecture Hall

Integrative and Collaborative Care

Chair: *W. Söllner (Nuremberg, Germany), J. Levenson (Richmond, VA, USA)*



Integrating care: A global mental health issue

P. Summergrad (Boston, USA)



Collaborative care for the depressed medically ill patient: Implementation and outcome

J. Unützer (Seattle, USA)

14:30 – 14:45

Coffee Break

Foyer

14:45 – 16:30

Scientific Symposium

SOM

Lecture Hall

Illness Mechanisms in Functional Somatic Syndromes and Somatic Symptom Disorder

Chairs: *A. Schröder (Aarhus, Denmark), J.G.M. Rosmalen (Groningen, The Netherlands)*

The need for a generic, balanced, data-driven understanding of functional somatic syndromes and somatic symptom disorder

A. Schröder (Aarhus, Denmark)

Less is more. A critical view on etiological models of functional somatic symptoms

J.G.M. Rosmalen (Groningen, The Netherlands)

Developmental trajectories and risk factors of functional somatic symptoms:

A synthesis of findings from two large epidemiological studies

C.U. Rask (Aarhus, Denmark)

What can we learn about functional somatic syndromes from neuroimaging studies?

K.J. Pallesen (Aarhus, Denmark)

Psychological mechanisms consistently associated with functional and somatoform disorders

M. Kleinstäuber (Marburg, Germany)

14:45 – 16:30

Scientific Symposium

NP

Conference Room 1

A Bio-Psycho-Social Perspective on HIV/AIDS

Chairs: *J. Blanch (Barcelona, Spain), S. Ferrari (Modena, Italy)*

Psychiatric comorbidities in HIV/AIDS patients

J. Blanch (Barcelona, Spain)

Psychosocial work with HIV/AIDS patients and families through community health care workers in South Africa

U. Merk (Frankfurt, Germany)

Working with HIV/AIDS patients in San Francisco

S.A. Frankel (San Francisco, USA)

The HD project – biomarkers of depression in HIV newly diagnosed patients

S. Ferrari (Modena, Italy), M. Menozzi, S. Alboni, M. Miselli, M. Rigatelli, A. Ghidoni

Antidepressant treatment associated with antiretroviral medications:

The significant contribution of the pharmacist in consultation-liaison psychiatry

M. Guitteny (Nantes, France)

14:45 – 16:30

Scientific Symposium

S/PNI

Conference Room 2

New Insights into Stress Regulation and Stress Related Risk Factors for Incident Type 2 Diabetes Mellitus.

Chairs: K.-H. Ladwig (Munich, Germany), J. Kruse (Giessen, Germany)

Increasing risk for incident type 2 diabetes by sub-threshold stress conditions:

Findings from the population-based MONICA/KORA cohort study

J. Baumert (Munich, Germany), K. Lukaschek, J. Kruse, R.T. Emeny, C. Meisinger, K.H. Ladwig

Lack of social interaction as risk factor for T2DM-onset: Findings from the population-based MONICA/KORA study

K. Lukaschek (Munich, Germany)

Higher body mass index (BMI) relates to lower glucocorticoid inhibition of inflammatory cytokine production following acute psychosocial stress in men

P.H. Wirtz (Konstanz, Germany)

Association of salivary cortisol levels and type 2 diabetes in the KORA-Age study

H. Johar (Munich, Germany)

A review of the functional and molecular implications of stress, neurotrophins and neuro-peptides in type 2 diabetes development and progression

E. Peters (Giessen, Germany)

Early childhood adversity and T2 diabetes onset in adult life

J. Kruse (Giessen, Germany)



Zeit für Bildung
Kongress - Dokumentationen

• Kongresse • Tagungen • Symposien • Konferenzen • Vorträge •

Josef Hager | A - 5310 Mondsee, Mondseebergstraße 15

www.zeitfuerbildung.at

josef@zeitfuerbildung.at | +43 (0) 680 3128353

14:45 – 16:30

Scientific Symposium

TM

Conference Room 3

Transplantation I: Challenges in Transplant Psychiatry - the 2015 update

Chair: P. Zimbrea (New Haven, USA), K.L. Coffman (Cleveland, USA), F. Vitinius (Cologne, Germany)

Eating disorder symptoms in liver transplant recipients

K. Cartiera (New Haven, USA), L. Dudley, G. Babas, S. Emre

Expanding the role of transplant psychiatrist on a liver transplant team

S. Hafliger (New York, USA)

The Know-How of Face transplant psychiatric evaluation

K.L. Coffmann (Cleveland, USA)

Differentiated assessment of personality and its implications in living kidney donation

R. Conrad (Bonn, Germany)

The Stanford integrated psychosocial assessment for transplantation, healthcare utilization, and adverse medical events for 3 years post-kidney transplantation

C. Thiessen (New Haven, USA), R. Patron-Lozano, N. Edgington, M. Joyce, C. Gaffney, L. Skrip, J. Wang, P. Zimbrea, S. Kulkarni

14:45 – 16:30

Scientific Symposium

Conference Room 4

Mood and Emotion in People with Chronic Pain

Chairs: A. Ciaramella (Pisa, Italy), A.F. Allaz (Geneve, Switzerland)

A genetic model for chronic widespread pain:

clinical comorbidities and psychological correlates

A. Burri (Zurich, Switzerland), S. Ogata, G. Lachance, F. Williams F

Depression in chronic pain patients -

questioning a narrow concept within a complex condition

U. Kaiser (Dresden, Germany)

Mood spectrum disorders in chronic pain patients

A. Ciaramella (Pisa, Italy), P. Poli

Mindfulness and chronic pain. What is next step?

P.C. la Cour (Copenhagen, Denmark)

Emotional aspects of chronic pain

A.F. Allaz (Geneve, Switzerland), C. Cedraschi

14:45 – 16:30 Scientific Symposium COLL Conference Room 6

Collaborative Care: Embedding Routine Mental Health Assessment and Management in General Hospital Settings

Chairs: A. Simpson (London, UK), J. Unützer (Seattle, USA)

Improving distress in dialysis: The development of an online cognitive-behavioural therapy (CBT) intervention for managing distress in dialysis

J. Hudson (London, UK), R. Moss-Morris, C. Vari, D. Game, A. Carroll, J. Joseph, L. Yardley, M. Hotopf, J. Chilcot

Integrating mental and physical healthcare: Research, training and services (IMPARTS) -

A flexible service development platform for general hospital teams

M. Hotopf (London, UK), L. Rayner, A. Simpson, F. Matcham, J. Taylor

Measuring distress in musculoskeletal physiotherapy: An example of integrated care in action

N. Wilson (London, UK), J. Hutton, F. Matcham

Effectiveness of collaborative care in the workplace for depression: Results of a controlled observational trial

E. Rothermund (Ulm, Germany), R. Kilian, D. Mayer, M. Hölzer, M. Rieger, H. Gündel

Development and evaluation of a local patient care plan for patients with neurologic symptom disorder at Karolinska University Hospital Huddinge

M. Bendix (Stockholm, Sweden), M. Akumu-Opwapo, S. Hellström, B. Sarilja

14:45 – 16:30 Scientific Symposium COM Conference Room 7

Communication Skills Training

Chairs: A. Berney (Lausanne, Switzerland), M. Keller (Heidelberg, DE)

What clinicians perceive with regards to end-of-life communication: Latent discourses and unvoiced topics

F. Stiefel (Lausanne, Switzerland)

What clinicians perceive as needs with regard to end-of-life communication:

Manifest discourses

B. Bourquin (Lausanne, Switzerland)

Development of a national, longitudinal communication skills curriculum for undergraduate medical education

J. Jünger (Heidelberg, Germany), C. Weiss, K. Kröll, E. Fellmer-Drüg, N. Ringel, M. Sator, M. Gornostayeva, V. Köllner

Teaching Breaking Bad News to medical students: an efficacy study comparing two teaching programs

A. Berney (Lausanne, Switzerland)

Does patient-centered communication matter? Cancer patients' perspective

J. Zwingmann (Heidelberg, Germany), M. Keller

16:30 – 16:45 Coffee Break Foyer

16:45 – 17:30 Poster Session 1 Foyer

Poster Session 1

For detailed information see p. 60

17:30 – 19:15 Scientific Symposium SOM Lecture Hall

Somatic Symptom/Somatoform Disorders – Diagnosis and Treatment in Primary Care

Chairs: H.C. Deter (Berlin, Germany), A.F. Allaz (Geneve, Switzerland)

A Danish nationwide educational program for primary care physicians in the treatment of bodily distress/medically unexplained symptoms

P.K. Fink (Aarhus, Denmark)

A systematic review of the current barriers to diagnosing somatoform disorders in primary care

A.M. Murray (Hamburg, Germany), A.Toussaint, A. Althaus, B. Löwe

Diagnostic accuracy for somatoform disorders and comorbid depression and anxiety disorders in primary care

K. Lau (Hamburg, Germany), B. Groß, M. Gladigau, A. Kuby, M. Shedden-Mora, B. Löwe

Development and validation of a new self-report measure:

The 'Somatic Symptom Disorder - B Criteria Scale (SSD-12)'

A. Toussaint (Hamburg, Germany), A.M. Murray, K. Voigt, B. Herzog, B. Gierk, K. Kroenke, W. Rief, P. Henningsen, B. Löwe

Enhanced medical care – means of choice in somatoform disorders?

Experiences from a randomized clinical trial "PISO"

H. Sattel (Munich, Germany)

17:30 – 19:15

Scientific Symposium

Conference Room 1

Illness Perceptions and Explanatory Models - What Can We Learn from Different Cultures?

Chairs: R. Burian (Berlin, Germany), I. Tarricone (Bologna, Italy)

Explanatory models of psychosis amongst British South Asians

A. Bhikha (Manchester, UK), S. Farooq, N. Chaudhry, F. Naeem, N. Husain

Symptoms between social and cultural psychiatry: The kids are alright? Understanding syndromes related to digital age

P. Cianconi (Rome, Italy), E. Albieri, A. Piazza

Current understanding of hypnosis in psychotherapy: A cross bridge between different cultural explanatory models in psychiatry?

J. Mertens (Sneek, The Netherlands)

Experiences from Norway - two case reports of highly complex patients with migrational background

O. Christiansen (Forde, Norway), V. Preljevic

Nobody told me about it! A qualitative study of barriers and facilitators in access to mental health services in women with depression in Karachi, Pakistan

F. Batool (Boston, USA), U. Boehmer, F. Feeley, S. Foster

17:30 – 19:15

Scientific Symposium

Conference Room 2

Brain & Bowel

Chairs: D. Dumitrascu (Cluj, Romania), P. Enck (Tübingen, Germany)

Population prevalence and psychosocial profile of chronic constipation of somatic and functional origin

P. Enck (Tübingen, Germany), J. Schwille-Kiuntke

Management of Irritable Bowel Syndrome (IBS) in a low income country: Exploratory randomised controlled trial of a culturally adapted psychological intervention and Imipramine

N. Husein (Manchester, UK)

Adverse childhood experiences and associations with self-reported gastrointestinal symptoms in young adults

A. Baban (Cluj-Napoca, Romania) A. Cozma, R. Balazsi, D. Dumitrascu

Prognosis of the irritable bowel syndrome – A longitudinal follow-up study of the general population in Denmark

C.H. Poulsen (Glostrup, Denmark), M. Eliassen, C. Hjorthøj, L.F. Eplöv, P.K. Fink, T. Jørgensen

The role of mood in irritable bowel syndrome symptom severity and the quality of life

S. Pletkovic (Rijeka, Croatia), M. Tkalcic, G. Hauser

17:30 – 19:15

Scientific Symposium

TM

Conference Room 3

Transplantation II: Standardizing Psychosocial Assessment of Transplant Candidates

Chairs: T. Schneekloth (Rochester, USA), F. Vitinius (Cologne, Germany)

Assessment and treatment of alcohol use disorders in liver transplant candidates

T. Schneekloth (Rochester, USA), I. Mega, F. Vitinius, C. Papachristou, J.R. Maldonado, S.G. Jowsey-Gregoire

Identifying high risk characteristics of living kidney donors

S.G. Jowsey-Gregoire (Rochester, USA)

The hand transplant evaluation

M. Kumnig (Innsbruck, Austria)

Predictive value of the SIPAT for post-transplantation outcomes

J.R. Maldonado (Stanford, USA)

Trends and challenges in Europe in standardizing the psychosocial assessment and care of transplant candidates and organ donors

C. Papachristou (Berlin, Germany), I. Mega, F. Vitinius

17:30 – 19:15

Scientific Symposium

EC

Conference Room 4

Research from Early-Career Psychiatrists and Psychologists

Chairs: G. Airagnes (Paris, France), K. Schmelzer (Nuremberg, Germany)

Association between anxiety and depressive symptoms with metabolic syndrome in primary care: results of an Italian cross-sectional study involving outpatients.

G. Mattei (Modena, Italy), G. Rioli, S. Ferrari, G.-M. Galeazzi, S. Bursi, S.M. Padula, L. Pingani, M. Rigatelli

Psychological distress and quality of life in lung transplant patients.

A six months observational study.

A. Seiler (Zurich, Switzerland), J. Jenewein, C. Martin-Soelch, L. Goetzmann, I. Inci, W. Weder, M. Schuurmans, C. Benden, A. Brucher, R. Klaghofer

A cross-cultural comparison of climacteric symptoms

Y. Zhang (Freiburg, Germany/ China), X. Zhao, M. Nadig, R. Leonhart, A. Hasenburg, M. Wirsching, K. Fritzsche

Analysis of current state regarding teaching and assessment of communication skills in undergraduate medical education in Germany

C. Weiss (Heidelberg, Germany), K. Kröll, E. Fellmer-Drüg, N. Ringel, M. Sator, J. Jünger

The long shadows of early life events: childhood adversity moderates depressive symptoms changes following retirement in the GAZEL cohort.

G. Airagnes (Paris, France), C. Lemogne, S.M. Consoli, M. Zins, F. Limosin

17:30 – 19:15

Scientific Symposium

Conference Room 6

Psycho-Cardiology

Chairs: C. Herrmann-Lingen (Göttingen, Germany), M. Beresnevaite (Kaunas, Lithuania)

Association of the Type D personality with SCID diagnosis of mental disorders - results from the SPIRR-CAD trial

C. Albus (Cologne, Germany), F. Lambertus, K. Fritzsche, S. Hamacher, M. Hellmich, J. Jünger, K.-H. Ladwig, M. Michal, J. Ronel, J.H. Schultz, F. Vitinius, C. Weber, C. Herrmann-Lingen

Enhancement of physical activity for elderly patients with diastolic heart failure by a psychosocial motivational intervention (pilot data from an add on study to the Ex-DHF Trial)

A. Bosbach (Göttingen, Germany), F. Edelmann, K. von Oehsen, R. Wachter, C. Herrmann-Lingen

Individual symptoms of depression across age and sex in the prediction of all-cause mortality in patients with myocardial infarction

R. de Miranda Azevedo (Groningen, The Netherlands), A.M. Roest, P. de Jonge, J. Denollet

WEB-based distress management program for implantable CARdioverter dE fibrillator patients (WEBCARE): Results and lessons learnt

S. Pedersen (Odense, Denmark), M. Habibovic, J. Denollet, P. Cuijpers, V.R.M Spek, K.C. van den Broek, L. Warmerdam, P.H. van der Voort, J.-P. Herrman, L. Bouwels, S. Valk, M. Alings, D. Theuns

The effect of gender on health-related quality of life in depressed post-cardiac surgery patients

M. Beresnevaite (Kaunas, Lithuania), R. Benetis, S. Rasinskiene, S. Kinduris

Enjoy your events with



Andreas-Hofer-Straße 6 EG, 6020 Innsbruck, Austria

T. +43 512 567303 | F. +43 512 567303 55 | eugen.preuss@pdl.at

17:30 – 19:15

Scientific Symposium

SOM

Conference Room 7

Somatoform and Related Disorders in Children and Adolescents – Clinical Aspects and Treatment

Chairs: C.U. Rask (Aarhus, Denmark), E. Weisblatt (Beeston, UK)

ACT-based group therapy of severe functional disorders in adolescents: presentation of pilot data

K.H. Kallesøe (Aarhus, Denmark), A. Schröder, T. Preuss, R. Wicksell, P. Fink, C.U. Rask

Clinical features of children with functional somatic symptoms referred to psychiatric treatment

S. Tøt-Strate (Odense, Denmark), G. Delholm-Lambertsen, K. Lassen, C.U. Rask

Attachment style and perceived social support as predictors of somatoform disorders in adolescents

O. Popa-Velea (Bucharest, Romania), C. Trutescu, I. Cioca, L. Diaconescu

Diagnostic practice of psychogenic nonepileptic seizures (PNES) in the pediatric setting

B.T. Wichaidit (Aarhus, Denmark), J.R. Østergaard, C.U. Rask

Health anxiety, illness beliefs and functional symptoms in children of mothers with severe health anxiety – an exposure study

M.V. Thorgaard (Aarhus, Denmark), L. Frostholm, L. Walker, C.U. Rask

19:15 – 20:00

Accompanying Event

Foyer

Get Together in Meistersingerhalle

19:30 – 22:00

Meeting

Conference Room 4

DGPM Bayern Mitgliederversammlung (Closed Session)

Chair: G. Berberich (Windach, Germany)

20:00 – 22:00

Meeting

Conference Room 7

EAPM General Assembly (Closed Session)

Chair: W. Söllner (Nuremberg, Germany)



Program
Friday July 3rd, 2015

EAPM 2015

**Challenges and Chances
for Psychosomatic Medicine in Health Care**

THEMATIC TRACKS	
SOM	Somatic Symptom Disorder/ Somatisation
NP	Neuropsychiatry
S/PNI	Stress/ Psychoneuroimmunology
COLL	Collaborative & Integrative Care
COM	Communication
EC	Early Career
PT	Psychotherapy
TM	Transplantation Medicine

TIME	Lecture Hall	Conference Room 1	Conference Room 2	Conference Room 3		Conference Room 4	Conference Room 6	Conference Room 7	Conference Room 5	TIME
07:30	REGISTRATION FOR THE MEETING					REGISTRATION FOR THE MEETING				07:30
08:00		p. 40	p. 40	p. 40		p. 40		p. 40		08:00
		WORKSHOP: Violence Towards Care Providers	WORKSHOP: The ISR-10	WORKSHOP: The Idiolect		Organization of Care		Communication Skills in Medical Education		
09:00	p. 41									09:00
	Brain-Immune Interaction									
10:30										10:30
11:00	p. 41	p. 42	p. 42	p. 43		p. 43	p. 44	p. 44	p. 44	11:00
	Brain-Immune Associations in Chronic Fatigue	Psychotherapy in the Medically Ill	From Couples to Parents	CL in Emergency Departments		Somatic Symptom Disorder in China	ADHD in Adults	Psycho- dynamic Bedside Teaching	How to Get Your Paper Published; the Editor's Point of View	
12:30	p. 87	p. 45	p. 45	p. 45		p. 45	p. 87	p. 45	p. 45	12:30
	Lunch Break	The INTERMED Working Group	Transplantation Medicine	Early Career		Cardiovascular Disease Prevention	Lunch Break	The Child and Adolescent Working Party	JPR Editorial Board Meeting	
13:30	p. 46									13:30
	Challenges & Chances Alison Creed Award Lecture									
15:00	Coffee Break					Coffee Break				15:00
15:15	p. 46	p. 47	p. 47	p. 48		p. 48	p. 48	p. 49		15:15
	Somatic Symptom Disorder: Cochrane Reviews	Neuro- psychiatry	Attachment	Management of Suicide Attempts		Psychosomatic Medicine in Japan & South Korea	Depression and Anxiety in Chronic Conditions	Behavioural Medicine (ISBM)		
16:45	Coffee Break					Coffee Break				16:45
17:15	p. 49	p. 50	p. 50	p. 51		p. 51	p. 52	p. 52		17:15
	Somatic Symptom Disorder: Management and Treatment	Psycho- Dermatology (EADaP)	Psychoneuro- immunology	Brain Neuroimaging		Obesity	Depression and Anxiety in Medically Ill	Psycho- Oncology		
19:00										19:00
19:30	pages 53 and 86					pages 53 and 86				19:30
20:00	Conference Dinner & Party at the Altes Rathaus Nuremberg (Town Hall)					Conference Dinner & Party at the Altes Rathaus Nuremberg (Town Hall)				20:00
open										open

8:00 – 9:00 **Workshop** Conference Room 1

Violence Towards Care Providers in the General Hospital: Strategies for Assessment, Treatment, Safety, and Risk Reduction

Chair: R. Brendel (Boston, USA), J. Rundell (Rochester, USA),
For detailed information see p. 80

8:00 – 9:00 **Workshop** Conference Room 2

The ICD-10-Symptom-Rating-Plus (ISR+)

Chair: K. Tritt (Regensburg, Germany), M. Zaudig, F. von Heymann, T. Loew, W. Söllner
For detailed information see p. 81

8:00 – 9:00 **Workshop** **PT** Conference Room 3

The Patient Holds the Key - Idiomatics as an Innovative Interviewing Technique for Effectively Activating Patients Participation in the Therapeutic Process Following Their Idiosyncratic language

Chair: T. Rentel (Erlangen, Germany)
For detailed information see p. 81

8:00 – 9:00 **EAPM Working Group** Conference Room 4

Organization of Care (Open Session)

Chair: M. Bühring (Zeist, The Netherlands) & S. A. Frankel (San Francisco, USA)

8:00 – 9:00 **Workshop** **COM** Conference Room 7

Teaching and Assessment of Communication Skills in Medicine – from National to European Concept

Chair: J. Jünger (Heidelberg, Germany)
For detailed information see p. 82

9:00 – 10:30 **Plenary Lecture** Lecture Hall

Brain Immune Interaction

Chairs: J. Maldonado (San Francisco, USA), C. Schubert (Innsbruck, Austria)



Immune-to-brain interactions in the development of sickness behavior and depression

R. Dantzer (Houston, USA)



How to understand health consequences of complicated grief: Neuroscience findings and clinical implications

M.F. O'Connor (Tucson, USA)

10:30 – 11:00 **Coffee Break** Foyer

11:00 – 12:30 **Scientific Symposium** **S/PNI** Lecture Hall

Brain-Immune Associations in Chronic Fatigue

Chairs: J. Maldonado (San Francisco, USA), P.D. White (London, UK)

Mood and anxiety disorders in chronic fatigue syndrome, fibromyalgia, and irritable bowel syndrome. Results from LifeLines

K. Janssens (Groningen, The Netherlands), W. Zijlema, M. Joustra, J. Rosmalen

Systematic review of circulating cytokines in chronic fatigue syndrome

P.D. White (London, UK), L. Blundell, K. Ray, M. Buckland

Cortical hypoactivation during resting EEG suggests CNS pathology in patients with chronic fatigue syndrome

J. Maldonado (San Francisco, USA)

Case control study of circulating cytokines in chronic fatigue syndrome

P.D. White (London, UK), L. Clark, J.M. Thomas, M. Murphy, M. Buckland

11:00 – 12:30 Scientific Symposium PT Conference Room 1

Psychotherapy in the Medically Ill

Chairs: S. Ferrari (Modena, Italy), R. Burian (Berlin, Germany)

Towards a possibility of psychotherapy for patients with diabetic foot ulcer in a surgical hospital

O. Isachenkova (Nizhni Novgorod, Russia)

Hope for the hopeless or old wine in new bottles: ACT in chronic pain

R. Burian (Berlin, Germany), A. Diefenbacher

Group therapy with the medically ill

M. Novak (Budapest, Hungary)

Group therapy with elderly patients

K. Schwartz (Toronto, Canada)

11:00 – 12:30 Scientific Symposium Conference Room 2

From Couples to Parents: Life-long Psychobiological Adaption

Chairs: U. Ehlert (Zurich, Switzerland), B. Ditzen (Heidelberg, Germany)

Modern fatherhood and its consequences on psychobiological well-being

P. Waldvogel (Zurich, Switzerland), U. Ehlert, Cenof

Modulation of couples' stress hormones in everyday life through a minimal couple intervention

B. Ditzen (Heidelberg, Germany), C. Spoerri, G. Bodenmann,

The challenge of becoming parents

V. Andereg (Zurich, Switzerland), G. Bodenmann, K.W. Halford

Specific levels of competence in the context of mental or physical health in partnerships

K. Petrowski (Dresden, Germany), S. Schurig, P. Joraschky

11:00 – 12:30 Scientific Symposium Conference Room 3

Characteristics and Treatment of People Who Attend the Emergency Department

Chairs: E. Guthrie (Manchester, UK), T. Hyphantis (Ioannina, Greece)

Predictors of attendance at the Emergency Department in a population of patients with COPD

E. Guthrie (Manchester, UK), A. Blakemore, B. Tomenson, C. Afzal

Illness perceptions of people with chronic illnesses attending the emergency department are associated with suicidality risk independent of depressive and anxiety disorders

T. Hyphantis (Ioannina, Greece), A. Ninou, E. Ntountoulaki, V. Paika, A.F. Carvalho

Psychological treatment for people who present to the emergency room following self-harm: psychodynamic-interpersonal therapy

C. Turpin (Manchester, UK), R. Jordan, L. Lau

Setting up a primary care clinic for people at risk of self-harm

J. Jorden (Manchester, UK), C. Turpin, T. Lau

11:00 – 12:30 Scientific Symposium SOM Conference Room 4

Patients with Multiple Somatic Symptoms in China

Chairs: K. Fritzsche (Freiburg, Germany), R. Schäfert (Heidelberg, Germany)

Dysfunctional illness perception and illness behaviour associated with high somatic symptom severity and low quality of life in general hospital outpatients in China

Y. Zhang (Chengdu, China), K. Fritzsche, R. Leonhart, R. Nater-Mewes, A. Larisch, R. Schäfert

Quality of doctor-patient relationship in patients with high somatic symptom severity in China

H. Wu (Shanghai, China), K. Fritzsche, R. Schäfert, R. Leonhart, Y. Zhang, A. Larisch

Connections between physical symptom severity, health anxieties, perception of the disease, emotional stress and quality of life in one sample of Chinese breast cancer patients

R. Leonhart (Freiburg, Germany), I. Fischer, H. Koch, L. Tang, Y. Pang, R. Schäfert, K. Fritzsche

Comparison of the factorial structure of the PHQ-15 between Germany and China

R. Leonhart (Freiburg, Germany), K. Fritzsche, F. Fischer, L. Zhang

11:00 – 12:30 Scientific Symposium NP Conference Room 6

ADHD in Adults and Psychosomatic Diseases

Chairs: A. Conca (Bolzano, Italy), G. Niklewski (Nuremberg, Germany)

The Psychoneuroendocrinology of Attention Deficit/Hyperactivity Disorder (ADHD): a theoretical frame for a better pathophysiological knowledge and the development of new treatment strategies

P. de Rossi (Rome, Italy)

ADHD in C-L Services: the role of omega 3 beyond the EBM based prescription of methylphenidate/atomoxetine

A. Conca (Bolzano, Italy), G. Giupponi, L. Sanna, J. Deluca, L. Pagano

ADHD in adults and eating disorders

R. D'Amelio (Homburg/Saar, Germany)

ADHD in adults and the impact on suicidality in C-L psychiatry services

G. Giupponi (Bolzano, Italy), G. Gatti, L. Pagano, A. Conca

11:00 – 12:30 Workshop PT Conference Room 7

Psychodynamic Bedside Teaching

Chairs: K. Philbrick (Rochester MN, USA), M. Beutel (Mainz, Germany), B. Stein (Nuremberg, Germany)

For detailed information see p. 83

11:00 – 12:30 Workshop EC Conference Room 5

How to Get Your Paper Published: the Editors' Point of View

Chair: A.F.G. Leentjens (Maastricht, The Netherlands)

For detailed information see p. 83

12:30 – 13:30 Lunch Break (see p. 87) Foyer

12:30 – 13:30 EAPM Working Group COL Conference Room 1

Integrative Care and Management of Complexity: INTERMED (Open session)

Chairs: A. Boenink (Amsterdam, The Netherlands), S. Ferrari (Modena, Italy)

12:30 – 13:30 Special Interest Group TM Conference Room 2

Transplantation Medicine (Open session)

Chairs: F. Vitinius (Cologne, Germany), I. Mucsi (Toronto, Canada)

12:30 – 13:30 EAPM Working Group EC Conference Room 3

Early Career Psychiatrists (Open session)

Chair: G. Airagnes (Paris, France), K. Schmelzer (Nuremberg, Germany)

12:30 – 13:30 EAPM Working Group Conference Room 4

Working Group on Cardiovascular Prevention Guidelines

Chair: K. Orth-Gomer (Stockholm, Sweden)

12:30 – 13:30 EAPM Working Group Conference Room 7

The Child and Adolescent Working Party (Open session)

Chair: C.U. Rask (Aarhus, Denmark)

12:30 – 13:30 Meeting Conference Room 5

JPR Editorial Board Meeting (Closed session)

Chair: P. Bakker (Amsterdam, The Netherlands), A.F. Leentjens (Maastricht, The Netherlands), J. Levenson (Richmond, VA, USA)

13:30 – 15:00	Plenary Lecture	Lecture Hall
<p>Challenges & Chances <i>Chairs: Silvia Ferrari (Modena, Italy), Bernd Loewe (Hamburg, Germany)</i></p>		
 <p>Opportunities and Challenges for Psychosomatic Medicine - 2015 and Beyond <i>R. Kathol (Minneapolis/Burnsville, USA)</i></p>		
 <p>Award in memory of Alison Creed for life time achievement in the field of Psychosomatic Medicine/Consultation Liaison Psychiatry <i>Introduction to Alison Creed Award: F. Creed (Manchester, UK)</i> <i>Introduction to the awardee: B. Loewe (Hamburg, DE)</i> Investigating chronic pain <i>K. Kroenke (Indianapolis, USA)</i></p>		

15:00 – 15:15	Coffee Break	Foyer
---------------	--------------	-------

15:15 – 16:45	Scientific Symposium	SOM	Lecture Hall
---------------	----------------------	-----	--------------

Three Recent Cochrane Reviews of Interventions for Somatoform Disorders: Where Do We Stand and How to Increase the Body of Evidence?
Chairs: H. van der Horst (Amsterdam, The Netherlands), P. Henningsen (Munich, Germany)

Enhanced care by generalists for functional somatic symptoms and disorders in primary care, a Cochrane systematic review
M. Rosendal (Aarhus, Denmark), N. Blankenstein, R. Morriss, P. Fink, M. Sharpe, C. Burton

Non-pharmacological interventions for somatoform disorders and medically unexplained physical symptoms (MUPS) in adults, a Cochrane systematic review
N. van Dessel (Amsterdam, The Netherlands), M. Den Boeft, J.C. van der Wouden, M. Kleinstäuber, S.S. Leone, B. Terluin, M.E. Numans, H.W.van Marwijk

Pharmacological interventions for somatoform disorders in adults, a Cochrane systematic review

M. Kleinstäuber (Marburg, Germany), M. Witthöft, A. Steffanowski, M.W. van Marwijk, W. Hiller, M.J. Lambert

Interventions for somatoform disorders: how to increase the body of evidence?
J.V. van der Wouden (Amsterdam, The Netherlands), P. Fink, H.E. van der Horst

15:15 – 16:45	Scientific Symposium	NP	Conference Room 1
---------------	----------------------	----	-------------------

Neuropsychiatry
Chairs: A.F.G. Leentjens (Maastricht, The Netherlands), G. Schuessler (Innsbruck, Austria)

Acute brain failure: Pathophysiology, prevention, and treatment of delirium
J. Maldonado (San Francisco, USA)

Neuroinflammation and Delirium: blood transfusions as triggers of delirium
J. Maldonado (San Francisco, USA)

Emotional processing in Parkinson patients: an fMRI study
A.F. G. Leentjens (Maastricht, The Netherlands), A.J. Moonen, M. Wiesing, G.F. Fink, P.H. Weiss

Recognition of facial expression of emotion in patients with personality disorders: „Everywhere anger?“
G. Schüssler (Innsbruck, Austria), T. Beck

15:15 – 16:45	Scientific Symposium	PT	Conference Room 2
---------------	----------------------	----	-------------------

Research on Attachment
Chairs: J. Behringer (Erlangen, Germany), B. Strauss (Jena, Germany)

Can unresolved attachment status after bereavement or separation be predicted from emotional awareness and heart rate variability?

J. Behringer (Erlangen, Germany), J. Heider, F. Orthuber, P. Semmler, G. Spangler

Does unresolved attachment predict functional cognitive impairments after the activation of attachment related anxiety?

C. Subic-Wrana (Mainz, Germany), M. Beutel, J. Wiltink, N. Pastore

Contributions of patient and psychotherapist attachment status to treatment outcome, and the role of the patient’s openness

K. Petrowski (Dresden, Germany), A. Kracz, P. Joraschky

The relevance of attachment status in various stressful conditions for cognitive functioning, resolution of loss and separation, and psychotherapy outcome: Discussion

B. Strauss (Jena, Germany)

15:15 – 16:45 **Workshop** **EC** Conference Room 3

When is Suicide Something Else? Suicide Assessment and Management in Medical/Surgical Settings

Chair: J. M. Bostwick (Rochester, Minnesota, USA)

For detailed information see p. 84

15:15 – 16:45 **Scientific Symposium** Conference Room 4

Psychosomatic Medicine in Japan and South Korea

Chairs: E.J. Kim (Seoul, Rep. of Korea), Y. Kishi (Tokyo, Japan)

New advances in psycho-rheumatology and organ transplant psychiatry in Japan

K. Nishimura (Tokyo, Japan)

Distressed personality without a partner enhances the risk of depression in patients with coronary heart disease.

M.-S. Lee (Seoul, Rep. of Korea), E.j. Kim

Preventive effects of Ramelteon on delirium

K. Hatta (Tokyo, Japan)

Characteristics of patients with mental problems and the care by medical staff in a general hospital emergency room in Japan

Y. Yoshida (Kumamoto, Japan), S.Hashimoto, M. Harada, K. Yamashita, K. Watanabe,

T. Takahashi, D. Fujisawa

15:15 – 16:45 **Scientific Symposium** Conference Room 6

Longitudinal Symptomatology of Depression and Anxiety in Chronic Conditions

Chairs: M. Hotopf (London, UK)

One-off screen predicts future symptoms of depression and anxiety in Coronary Heart Disease

J.E. Palacios (London, UK), M. Khondoker, A. Tylee, M. Hotopf

The impact of baseline and persistent symptoms of depression and anxiety on long-term physical health outcomes and response to treatment in Rheumatoid Arthritis

F. Matcham (London, UK), S. Norton, D.L. Scott, S. Steer, M. Hotopf

Analysing the longitudinal course of depression - a comparison of different methods

T. Hoekstra (Amsterdam, The Netherlands)

Distinct developmental trajectories of late life depression: their predictors, patterns, and association with health related outcomes

S.E.M. van Dijk (Amsterdam, The Netherlands), C. Barbosa-Leiker, J.E. Bosmans, T. Hoekstra,

H. van Van Marwijk

15:15 – 16:45 **Scientific Symposium** Conference Room 7

Satellite Symposium of the International Society of Behavioral Medicine (ISBM): Behavioural Medicine in the Psychosomatic Context

Chairs: C. Vögele (Walferdange, Luxembourg), M. Novak (Budapest, Hungary/Toronto, Canada)

Burnout syndrome, coping strategies and risk behaviour in physicians working with terminal patients

O. Popa-Velea (Bucharest, Romania)

Psychobiological Mechanisms underlying the Effects of Couple Interactions on Health

B. Ditzen (Heidelberg, Germany)

System barriers and women's beliefs on cervical cancer screening in Romania & Bulgaria

A. Baban (Romania/Bulgaria), I. Todorova, C. Craciun

The role of behavioural sciences and psychosomatic medicine in sleep health

M. Novak (Budapest, Hungary/Toronto, Canada), I. Mucsi

16:45 – 17:15 **Coffee Break** Foyer

17:15 – 19:00 **Scientific Symposium** **SOM** Lecture Hall

Somatic Symptom Disorders: Management & Treatment

Chairs: P. Henningsen (Munich, Germany), P. Fink (Aarhus, Denmark)

Somatic symptom profiles in the general population:

A latent class analysis in a Danish population-based health survey

M. Eliassen (Glostrup, Denmark), S. Kreiner, J.F. Ebstrup, C.H. Poulsen, P.K. Fink, T. Jørgensen

Evaluation of a stepped, collaborative and coordinated health care network for somatoform and functional disorders (Sofu-Net)

M. Shedden-Mora (Hamburg, Germany), K. Lau, B. Groß, M. Gladigau, A. Gumz,

K. Wegscheider, B. Löwe

Are self-help interventions an effective treatment for medically unexplained symptoms?

A. van Gils (Groningen, The Netherlands), R.A. Schoevers, I.J. Bonvanie, J.M. Gelauff,

A.M. Roest, G.J. Rosmalen

Long-term economic evaluation of group CBT for functional somatic syndromes

A. Schröder (Aarhus, Denmark), E. Ørnbøl, J.S. Jensen, M. Sharpe, P. Fink

An explanatory framework for Medically Unexplained Symptoms in medical consultations

C. Burton (Aberdeen, UK), V. Deary, J. Clelland, L. Morton, A. Elliott

17:15 – 19:00 Scientific Symposium Conference Room 1

Psycho-Dermatology

Chairs: U. Gieler (Giessen, Germany), L. Tomas-Aragones (Zaragoza, Spain)

Secreted mammal Ly-6/urokinase-type plasminogen activator receptor-related proteins (SLURPs) are altered both in chronic inflammatory (atopic dermatitis) and mental (depression) disease

E.M.J. Peters (Giessen, Germany), J. Kupfer, B. Raghavan, A.L. Urban, W. Kummer, J. Kruse, U. Gieler

Body dysmorphic concerns in dermatology
L. Tomas-Aragones (Zaragoza, Spain), S.E. Marron

Skin Picking – new topic – new treatments
U. Gieler (Giessen, Germany), T. Gieler, E. Peters

How much do patients with skin conditions itch, and how does it affect their lives
R. Campos-Rodenas (Zaragoza, Spain), S. Boira, S.E. Marron

Skin and Psyche: What's new in Psychodermatology?
U. Gieler (Giessen, Germany), F. Poot, L. Tomas-Aragones, E. Peters

17:15 – 19:00 Scientific Symposium S/PNI Conference Room 2

Psychoneuroimmunology : On the Bidirectional Relationships between Behavioral Factors and Immune Activity

Chair: T. Lange (Lübeck, German), C. Schubert (Innsbruck, Austria)

On the complex interrelationships between stressors, sleep disturbance and immunological and endocrinological stress system variables: an integrative single case study on a healthy woman

C. Schubert (Innsbruck, Austria), M. Singer, W. Geser, D. Fuchs

Cause-effect relations between immune activity and sleep in a patient with prior breast cancer and current cancer-related fatigue and depression: A time-series analysis approach
M. Singer (Innsbruck, Austria), W. Geser, S. Peterlini, K. Fritzsche, C. Burbaum, D. Fuchs, C. Schubert C

Effects of different antidepressants on pro-inflammatory cytokines in rats undergoing chronic mild stress without lipopolysaccharide induction
R.C. Ho (Singapore, Singapore)

The interaction between physical activity and neuroinflammation
K. Krüger (Giessen, Germany)

Sleep, sleep deprivation and immune functions
T. Lange (Lübeck, Germany), L. Besedovsky, S. Dimitrov, E.-M. Schmidt, J. Born

17:15 – 19:00 Scientific Symposium NP Conference Room 3

Brain Neuroimaging

Chairs: A. Bulbena (Barcelona, Spain), M.-F. O'Connor (Tucson, USA)

Approach and avoidance in complicated grief: Neuroscience results and clinical implications
M.-F. O'Connor (Tucson, USA)

Brain neuroimaging in Psychiatry: ADHD, schizophrenia and anxiety
O. Vilarroya (Barcelona, Spain)

Brain neuroimaging in pain disorder
M. Noll-Hussong (Ulm, Germany)

Neuroimaging of the joint hypermobility syndrome: The role of interoception
N. Mallorqui (Barcelona, Spain)

The neuroconnective phenotype: A new model of illness. Preliminary data
A. Bulbena (Barcelona, Spain)

17:15 – 19:00 Scientific Symposium Conference Room 4

Psychosomatic Medicine in Obesity: Mechanisms and Interventions

Chairs: K. Giel (Tübingen, Germany), A. Müller (Hannover, Germany)

Targeting impulsivity in Binge Eating Disorder
K. Giel (Tübingen, Germany), M. Teufel, K. Schag, S. Zipfel

How to treat binge eating disorder: Is Dialectical Behaviour Therapy as effective as Cognitive Behaviour Therapy?
M. Lammers (Nijmegen, The Netherlands), M. Vroling, M. Ouwens, T. van Strien

Psychosocial predictors of post-operative excess weight loss after bariatric surgery
S.M. Consoli (Paris, France), G. Airagnes, H. Champagne, H. Campelli, F. Limosin, J.-M. Chevallier, C. Lemogne

Nutrition and eating behavior 4 years after laparoscopic sleeve gastrectomy
M. Teufel (Tübingen, Germany), S. Ölschläger, H. Sauer, T.Meile, K. Giel, S. Zipfel, I. Mack

Physical activity and cognitive functioning in patients undergoing bariatric surgery
A. Müller (Hannover, Germany), S. Langenberg, M. Schulze, M. Marscholke, M. de Zwaan

17:15 – 19:00 Scientific Symposium Conference Room 6

Anxiety & Depression in the Medically Ill

Chairs: F. Geiser (Bonn, Germany), A. Lobo (Zaragoza, Spain)

Depression at the time of hospital discharge in internal medicine inpatients

A. Lobo (Zaragoza, Spain), R. Campos, G. Marcos, F. Barcones, A. Bulbena, J. de Pablo, E. García-Camba, J. Farré, M. Girón, G. Manolo, A. Campayo, M. Lozano, C. Mingote, L. Salvador-Carulla, P. Saz

Enhancing depression screening in cardiology with active patient participation:

The DEPSCREEN-INFO Randomised Clinical Trial

B. Löwe (Hamburg, Germany), S. Blankenberg, K. Wegscheider, H.H. König, D. Walter, A.M. Murray, B. Gierk, S. Kohlmann

Are we betting on the wrong horse? Anxiety instead of depression as a causal risk factor for heart disease

A. Roest (Groningen, The Netherlands), K.M. Scott, P. de Jonge

Does anxiety mean the same in English and German language? Evaluation of the

psychometric equivalence of the PROMIS® Anxiety Item Bank and its German translation
I. Wahl (Hamburg, Germany), J. Rutsohn, D. Cella, B. Löwe, M. Rose, E. Brähler, P. Pilkonis, B. Schalet

Hope – a useful scientific concept in psychosomatics?

F. Geiser (Bonn, Germany), K. Zajackowski, A.-S. Koch

17:15 – 19:00 Scientific Symposium Conference Room 7

Psycho-Oncology

Chairs: J. Jenewein (Zurich, Switzerland), M. Keller (Heidelberg, Germany)

Couples and family-oriented interventions to alleviate psychological distress in cancer patients and their partners/families

M. Keller (Heidelberg, Germany), J. Jenewein, J. Alder

Web-based counseling for families with parental cancer: First data on effectiveness for children’s psychosocial well-being

J.H. Huggenberger (Basel, Switzerland)

A relaxation strategy for reducing chemotherapy side-effects

J. Hunter (Toronto, Canada), A. Chaoul, M. Fisch, M. Harden-Harrison, R. Bassett, D. Sui, R. Maunder, L. Lagrone, L. Cohen

Psychological factors and 5-year cancer survival: Prospective longitudinal analyses of epidemiological data from British Columbia

A. Vodermaier (Vancouver, Canada), W. Linden, S. Lucas, R. Olson

The investigation of the effect played by demographic variables and coping mechanisms on distress and well-being in a nationally representative Romanian sample of cancer patients

E.K. Kallay (Cluj Napoca, Romania), D.C. Degi

19:30 Bus Transfer

Bus transfer from the Conference Venue Meistersingerhalle to the Nuremberg Town Hall (Altes Rathaus) will be offered (approx. 20 min.)

20:00 – 1:00 Conference Dinner & Party Town Hall

Conference Dinner & Party

**Venue: Town Hall (Altes Rathaus/Wolffscher Bau)
Rathausplatz 2, 90403 Nürnberg**

Greetings: H. Riedl, Financial Counsellor of the City of Nuremberg

Music: Doc Horn & The Hornbabes (Berlin)

For detailed information see p. 84





Program
Saturday July 4th, 2015

EAPM 2015

**Challenges and Chances
 for Psychosomatic Medicine in Health Care**

THEMATIC TRACKS	
SOM	Somatic Symptom Disorder/ Somatisation
NP	Neuropsychiatry
S/PNI	Stress/ Psychoneuroimmunology
COLL	Collaborative & Integrative Care
COM	Communication
EC	Early Career
PT	Psychotherapy
TM	Transplantation Medicine

TIME	Lecture Hall
08:00	REGISTRATION FOR THE MEETING
09:00	p. 57 Psychotherapy with the Medically Ill / Internet-Based Methods
10:30	Coffee Break
10:45	p. 68 Postersession 2 in the FOYER
11:30	p. 58 Frits Huyse Award Lecture EAPM Young Investigator's Award Lecture
13:00	p. 58 Poster Awards & Closing Ceremony
14:00	p. 59 Consensus Meeting Transplantation Medicine Special address: General Hospital Nuremberg, Prof. Ernst-Nathan-Str. 1, Building 47
17:00	

9:00 – 10:30 **Plenary Lecture** **PT** Lecture Hall

Psychotherapy with the Medically Ill: Internet Based Methods

Chairs: E. Guthrie (Manchester, UK), C. van der Feltz-Cornelis (Tilburg, The Netherlands)



Psychodynamic psychotherapy online?
M. Beutel (Mainz, Germany)



Internet-based psychotherapy: Indications, outcome and the therapeutic relationship
C. Knaevelsrud (Berlin, Germany)

10:30 – 10:45 **Coffee Break** Foyer

10:45 – 11:30 **Poster Session 2** Foyer

Poster Session 2
For detailed information see p. 68

11:30 – 13:00

Plenary Lecture

Lecture Hall

Frits Huyse Award Lecture & EAPM Young Researcher’s Award Lecture

Chairs: U. Malt (Oslo, Norway), A.F.G. Leentjens (Maastricht, The Netherlands)



The EAPM Frits Huyse Award for outstanding contribution to the development of consultation-liaison psychiatry and integrated care

Introduction to the Awardee: U. Malt (Oslo, Norway)

Exploding myths about medically unexplained symptoms

F. Creed (Manchester, UK)

EAPM Young Investigator Award, sponsored by Elsevier

Introduction to the Awardee: A.F.G. Leentjens (Maastricht, The Netherlands), P. Bakker (Amsterdam, The Netherlands)



Workplace bullying among junior physicians in relation to depressive symptoms: The chicken, the egg or both?

A. Loerbroks (Duesseldorf, Germany)

13:00 – 13:30

Plenary Session

Lecture Hall

Poster Awards & Closing Ceremony

W. Söllner (Nuremberg, Germany), G. Schüssler (Innsbruck, Austria), U. Werneke (Lulea, Sweden)

14:00 – 17:00

Meeting

TM

General Hospital Nuremberg

Consensus Meeting Transplantation Medicine (Open session)

Chair: F. Vitinius (Cologne, Germany), Istvan Mucsi, Marta Novak, Stephen Potts

Altruistic or non-directed organ donation is practised to differing degrees in different countries, predominantly but not exclusively for kidneys. Some countries have undertaken it for years, some have adopted it recently, and others do not undertake it at all. In those countries which do undertake it there is wide variation in the arrangements for mental health assessments of prospective donors.

This meeting, convened by the Transplantation Medicine SIG of EAPM, is a first attempt to establish consensus guidance on the timing, methods, purpose, nature and outcomes of mental health assessments of altruistic donors. There will be presentation from the perspective of the UK & Ireland, US, Canada and other countries, followed by discussion which is hoped will generate written guidance.

Cave:

The meeting takes place in General Hospital Nuremberg, Prof. Ernst-Nathan-Str. 1, Building 47

POSTER SESSION 1 – THURSDAY JULY 2ND – 16.45 – 17.30

Body Image & Eating disorders

Chair: K. Giel (Tübingen, Germany)

- P1_01 Eating disorders symptoms in female athletes
Koraj I (Rijeka, Croatia), Pokrajac-Bulian A
- P1_02 Additive dance-therapeutic interventions reduce bodyweight in obese patients more effective than only movement therapy - a controlled study
Loew TH (Regensburg, Germany), Golomb E, Bernhardt A
- P1_03 Subsequent in- and out-patient treatment of severe and comorbid eating disorders: a complex psychodynamic-integrative therapy between the poles of psychiatric and psychosomatic medicine
Purucker M (Bayreuth, Germany), Huber V, Hempfling F, Wolfersdorf M
- P1_04 Traumatic experiences and familiar relations of two patient groups with bulimia nervosa and healthy controls
Susa A (Ulm, Germany), Müttel T, von Wietersheim J
- P1_05 Body-relatedness in severe somatoform disorder: evaluation of the Dresden Body Image Questionnaire
Scheffers MWJ (Zeist, The Netherlands), Kalisvaart HJB, Van Busschbach JT, Van Broeckhuysen-Kloth S, Bosscher RJ, Schoevers RA, Geenen R
- P1_06 Body drawings as an assessment tool for body-relatedness in patients with severe somatic symptom disorder
Kalisvaart HJB (Zeist, The Netherlands), Geenen RMJ, Van Busschbach J, Bühring M, Van Broeckhuysen-Kloth S
- P1_07 Screening for body dysmorphic disorder in acne patients
Tomas-Aragones L (Zaragoza, Spain), Cardoso-Moreno MJ

Child & Adolescent C-L Psychiatry I

Chair: U.C. Rask (Aarhus, Denmark)

- P1_08 Exploring self-efficacy and attitudes among pediatricians in managing medically unexplained physical symptoms
Broekhuijsen-van Henten DM (Zwolle, The Netherlands), Luitse GH, Knottnerus AC, Van Den Heuvel M

- P1_09 Early intervention program for impairing post-concussional symptoms in adolescents and young adults: Presentation of pilot data
Thastum M (Aarhus, Denmark), Rask CU, Næss-Schmidt ET, Svendsen SW, Nielsen JF, Schrøeder A
- P1_10 Health anxiety symptoms in a clinical population of children and adolescents being assessed for OCD
Villadsen A (Aarhus, Denmark), Viller Thorgaard M, Hybel KA, Hove Thomsen P, Rask CU
- P1_11 Adolescents with functional somatic symptoms: The influence of family therapy on empowerment and illness beliefs
Hulgaard DH (Odense, Denmark), Rask CU, Dehlholm-Lambertsen BD, Risør MR
- P1_12 An evaluation of sleep problems of Iranian elementary school children
Asgarian FS (Tehran, Iran), Etesam F, Fallahzadeh H
- P1_13 The salivary oxytocin response of severely early-traumatized children in relation to their attachment representations
Oberschneider L (Munich, Germany), Quehenberger J, Kern C, Brisch KH
- P1_14 playBENNO: the development and evaluation of a serious game to prevent mental stress during childhood
Rattenegger T (Klagenfurt, Austria), Rattenegger G, Korac S, Saliterer I, Rondo-Brovetto P, Wagner M, Scholz H
- P1_15 Features of verbal / non-verbal responses to the kindergarten children, induced by classical music
Avram LC (Bucharest, Romania), Iamandescu IB

Consultation-Liaison Psychiatry & Psychosomatics in Different Clinical Fields

Chair: D. Dumitrascu (Cluj, Romania)

- P1_16 Prospective validation study of the prediction of alcohol withdrawal severity scale (PAWSS)
Maldonado J (Stanford, USA)
- P1_17 Inhalant use in the general hospital. A South American Liaison - Psychiatry Perspective
Oviedo LG (Bogotá, Colombia)
- P1_18 Distress vulnerability in patients with drug allergy compared to patients with other psychocutaneous diseases
Diaconescu LV (Bucharest, Romania), Iamandescu IB
- P1_19 The important role of psychoeducation in dermatology
Tomas-Aragones L (Zaragoza, Spain), Cardoso-Moreno MJ
- P1_20 Job stress in irritable bowel syndrome
Popa S (Cluj-Napoca, Romania), Dumitrascu DL

- P1_21 Relationship among health-related quality of life, coping strategies and dysfunctional beliefs in Irritable Bowel Syndrome
Stanculete M (Cluj-Napoca, Romania), Pojoga C, Dumitrascu DL
- P1_22 The relationship between alexithymia, depression and quality of life in patients with functional dyspepsia
Vengher I (Kishinev, Moldavia), Dumitrascu DL
- P1_23 Psychobiological predictors after bariatric surgery: Results of a case-control study
Rodriguez Hurtado JR (Almeria, Spain), Fontalba Navas A, Ferrer Marquez M

Quality of Life, Anxiety and Depression in the Medically Ill

Chair: A. Bulbena (Barcelona, Spain)

- P1_24 Coping anxiety in patients scheduled for surgical intervention to achieve better outcome
Armean SM (Cluj-Napoca, Romania), Popescu CA, Matyas KA, Tudorache O, Buzoianu AD
- P1_25 Assessment of anxiety and depression in a cohort of one-year follow-up patients after heart transplantation
Pintor L (Barcelona, Spain), Baillés E, Peri JM, Bastidas A, Perez Villa F, Bulbena A, Sánchez R
- P1_26 Slow respiring supported by a periodical mechanic haptic stimulus reduces situative anxiety in psychosomatic patients. A randomized controlled trial.
Loew TH (Regensburg, Germany), Rittmann I
- P1_27 The quality of life of patients with poliartrite reumatoides and depressive symptoms
Szalontay AS (Iasi, Romania), Rezus E
- P1_28 Quality of life in patients with acromegaly: the preliminary Results
Szczesniak D (Wroclaw, Poland), Jawiarczyk-Przybylowska A, Bolanowski M, Rymaszewska J
- P1_29 Monitoring of Quality of Life – Feasibility of Web-Based Home-Assessments in Elderly Palliative Patients
Gamper EM (Innsbruck, Austria), Kresic S, Buxbaum S, Kenjic V, Oberguggenberger A, Sztankay M, Wintner L, Holzner B, Virgolini I
- P1_30 Influence of coping style and resilience on the perceived quality of life at cancer patients
Popa-Velea O (Bucharest, Romania), Jidveian M, Trutescu C, Cioca I, Diaconescu L
- P1_31 The association of perseverative negative thinking with negative affect in long term conditions: A systematic review
Trick L (Exeter, UK), Watkins E, Dickens C

Models of Integrated and Collaborative Care

COL

Chair: C. Leue (Maastricht, The Netherlands)

- P1_32 When questions are as useful as answers: using dialogical approach in cooperation of care of psychosomatic patients
Hornova L (Žamberk, Czech Rep)
- P1_33 Curative factors in self-help groups during and after inpatient psychosomatic treatment
Laumen K (Bonn, Germany), Langenbach M
- P1_34 Disentangling health complexity among internal medicine, hospitalized patients
Lobo EL (Zaragoza, Spain), Ventura TV, Navío MN, Santabárbara J, Kathol R, Samaniego ES, Marco C, Lobo A
- P1_35 CLP in the general hospital: a review of the activities in Modena over a 14 year period
Moscara M (Modena, Italy), Bolondi M, Cameli M, Guicciardi A, Martire L, Mattei G, Moretti V, Carra E, Ferrari S
- P1_36 Treatment of adolescent inpatients in a psychosomatic day clinic
Tominschek I (Munich, Germany)
- P1_37 Measurement qualities & plans for future application of the INTERMED self-assessment
Van Reedt Dortland A (Amsterdam, The Netherlands), Peters L, Smit JH, Slaets JP, Boenink A, Stiefel F, Zdrojewski C, Ferrari S
- P1_38 Does it work? Evaluation of a psychosomatic inpatient treatment approach for patients with severe medical comorbidity - first Results
Wentzlaff E (Nuremberg, Germany), Stein B, Wilhelm M, Zenkert B, Söllner W
- P1_39 Inpatient Psychotherapy as an Effective and Sustainable Treatment Concept
Riessland-Seifert AR (Vienna, Austria), Doppelhofer WD, Fitz MF, Kalusch-Klug IK, Klimek SK, Lackner JL, Rohrhofer MR, Sallermann CS, Weipert SW, Jagsch RJ

Neurobiological Aspects in Psychosomatic Medicine

NP

Chair: U. Malt (Oslo, Norway)

- P1_40 Low dose aspirin reduces cardiovascular reactivity and depressed mood in acutely bereaved – a pilot study.
Karl S (Tucson, USA/Ulm, Germany), Fallon M, Palitsky R, Gündel H, O'Connor M-F
- P1_41 Depression induced by interferon-alpha and ribavirin during the HCV treatment is reversible and not depends on psychological factors.
Malyszczak K (Wroclaw, Poland), Pawlowski T, Frydecka D
- P1_42 The Trier Social Stress Test 2.0: Using a virtual world to elicit an acute cortisol response
Fallon M (Kent, USA), Serrano-Careaga J, Sbarra DA, O'Connor M-F

- P1_43 Gonadotropin hormones in chronic hepatitis
Lupasco I (Chisinau, Moldavia), Dumbrava V-T, Vengher I, Berezovscaia E
- P1_44 Tako-Tsubo Cardiomyopathy and psychiatric disorders: review of comorbidity
Rioli G (Modena, Italy), Galeazzi GM, Ferrari S, Rigatelli M
- P1_45 Neuroactive steroids and psychosis: a role for progesterone?
Tarricone I (Bologna, Italy), Belvederi M, Fanelli F, Pagotto U, Bonora E, Mandelli V, Berardi D, Pariante C
- P1_46 Early adversity, perfectionism, and the cortisol stress response in Chronic Fatigue Syndrome
Kempke S (Leuven, Belgium)
- P1_47 Whole-body cryotherapy – possible supplementary biological approach in mood disorders
Stanczykiewicz B (Wroclaw, Poland), Urbanska K, Szczesniak D, Rymaszewska J

Personality Structure & Suicidal Behaviour

Chair: E. Guthrie (Manchester, UK)

- P1_48 Resilience and structure of personality – is it all the same story?
Schuster C (Windach, Germany), Zaudig M, Berberich G
- P1_49 Differentiation of complex trauma vs schizophrenia through diagnostic assessment of ability and personality characteristics
Kurz R (London, UK)
- P1_50 Type A personality and arterial hypertension. Psychosomatic aspects and somatopsychic.
Trifu SC (Sapunari, Romania), Carp EG, Braileanu D, Gutt AM
- P1_51 Prevention, diagnosis and healing of complex trauma: Applying the great 8 competencies
Kurz R (London, UK)
- P1_52 The impact of chronic pain on suicidal behavior
De Heer E (Tilburg, The Netherlands), Ten Have M, Van Marwijk H, Dekker J, De Graaf R, Van Der Feltz-Cornelis C
- P1_53 SMS psychotherapy – an additional support for stabilisation and suicide prevention
Leiberich P (Regensburg, Germany), Nickel M, Loew TH
- P1_54 Gender differences in assessing suicidality risk in people with chronic illnesses attending the emergency department
Hyphantis T (Ioannina, Greece), Ntountoulaki E, Paika V, Carvalho A, Guthrie E
- P1_55 When personality impacts pain - Chronic pain and attachment style in the therapeutic treatment process
Neubauer E (Heidelberg, Germany), Götz T, Pfeiffer A-K, Amelung D, Schiltenwolf M.

Psychiatric Assessment in Organ Transplantation

TM

Chair: F. Vitinius (Köln, Germany)

- P1_56 Association between initial psychosocial assessment of candidates for transplantation (PACT) score and mortality among lung transplant recipients at Mayo Clinic, Rochester
Hitschfeld MJ (Rochester, USA), Jowsey-Gregoire SG, Kennedy CC, Niazi SK, Vasquez AR, Geske JR, Schneekloth TD
- P1_57 Mental health and behavioral barriers to completing the pre-transplant evaluation
Michael J (Toronto, Canada), Bansal A, Novak Marta, Famure O, Kim JS, Mucsi I
- P1_58 Assessment of elderly liver transplant (LT) candidates: Mayo Clinic Approach
Niazi SK (Florida, USA), Keaveny AP, Vasquez AR, Taner BC, Davis SP, Picco M, Schneekloth TD, Jowsey-Gregoire S, Rummans TA
- P1_59 Mayo Clinic model of pre-transplant psychosocial screening and evaluation
Schneekloth TD (Rochester, USA)

Psychotherapy with the Medically Ill

PT

Chair: M. Novak (Budapest, Hungaria/ Toronto, Canada)

- P1_60 Experiences with “consultation liaison internal medicine” in more than 4000 psychiatric patients
Abrahamian H (Vienna, Austria)
- P1_61 Effect of psychotherapy on mental health in patients with heart failure
Aghajani M (Kashan, Iran), Taghadosi M, Rohollah F
- P1_63 The effects of classical music upon bronchial obstruction in bronchial asthma
Popilean FI (Bucharest, Romania), Iamandescu IB, Rascu A
- P1_64 The idiolect in the therapeutic dialogue with psychosomatic patients
Rentel T (Nuremberg, Germany)
- P1_65 Outcome of cognitive behavioral therapy for patients with severe health anxiety treated in groups. Preliminary results from the pilot study of the CHAG-Trial.
Skjernov M (Aarhus, Denmark), Fink P, Fallon B, Simonsen E
- P1_66 Depression and pain dimensions in the assessment of health-related quality of life in older adults
Allaz A-F (Geneva, Switzerland), Luthy C, Herrmann F, Ludwig C, Cedraschi C
- P2_67 Influence of depressive symptoms on QbTest performance in adult ADHD patients
Brandl C (Nuremberg, Germany)

Psychopharmacology in Medically Ill Patients**NP***Chair: A. Berney (Lausanne, Switzerland)*

- P1_68 Pain in depressive disorders: a meta-analysis on dual-action antidepressants
Gebhardt S (Wiesloch, Germany), Heinzel-Gutenbrunner M
- P1_69 Psychopharmacological reasoning for prescribing psychotropics to patients with medical-surgical disease
Millán-González R (Costa Rica)
- P1_70 Agitated ICU Delirium: when antipsychotics fail
Morar DF (Providence, USA), Harrington CJ
- P1_71 Pharmacological approach to mild depression in Japan
Ohta D (Japan), Terada H
- P1_72 Does severe affective disorder affect renal function?
Werneke U (Umeå, Sweden), Ott M, Stegmayr B, Salander Renberg E
- P1_73 Effects of drug guidelines on prescriptions of benzodiazepine and non-benzodiazepine under National Health Insurance System
Yang S-N (Taoyuan, China), Kao Y-H
- P1_74 Drug interaction between Imipenem and Valproic in bipolar disorder: a case study
Alba Palé L (Barcelona, Spain) et al.

Communication Skills**COM***Chair: J. Juenger (Heidelberg, Germany)*

- P1_75 A computer assisted class in giving feedback for medical students
Breuss M (Innsbruck, Austria), Huber A, Hoflehner A, Longato S, Mitmansgruber H, Schneitter I, Kumnig M, Höfer S
- P1_76 Development of a “Four-Habits”-based communication training for German General Practitioners (CoTrain trial) – Experience with a train-the-trainer course
Vitinius F (Cologne, Germany), Steinhausen S, Wilm S, Leve V, Ommen O, Pfaff H, Alich M, Bödecker AW, Gulbrandsen P, Neugebauer E
- P1_77 Development of questionnaire for the estimation of physician’s communication skills in oncology
Vitinius F (Cologne, Germany), Pärschke P, Boden M, Wunsch A
- P1_78 Empathy: a skill we need to focus on in psychiatric training? A short journey from philosophy to psychiatry
Rioli G (Modena, Italy), Brencio F, Campalastri R

- P1_79 Training of consultation liaison psychiatrists and nurses. Testing of a one year programme.
Wahlström L (Huddinge, Sweden), Blomdahl Wetterholm M
- P1_80 Psychotherapy at the edge of time. After a long journey, what is really therapeutic?
Cianconi P (Roma, Italy)

POSTER SESSION 2 – SATURDAY JULY 4TH, 2015 – 10.45 – 11.30

Child & Adolescent C-L Psychiatry II

Chair: U. C. Rask (Aarhus, Denmark)

- P2_01 Intentional Colchicine ingestion in an adolescent - a case report
Alpert O (Philadelphia, USA), Majumder P
- P2_02 Pharmacological management of depression/anxiety in pediatric cancer patients
Altaha B (Morgantown, USA)
- P2_03 Sexual abuse predicts functional somatic symptoms: An adolescent population study
Bonvanie J (Groningen, The Netherlands), Van Gils A, Janssens KA, Rosmalen JG
- P2_04 Sleep disruption in adolescents with severe functional somatic complaints: a pilot study.
Verheijen VB (Hoofddorp, The Netherlands), Knottnerus AC, Astill RG, Jagt YQ, Derkx BH
- P2_05 EPS after one dose of Haldol in an adolescent patient treated for aggression and hallucinations in delirium
Altaha B (Morgantown, USA)
- P2_06 An integrated neuropsychiatry/paediatric clinic for children with prenatal alcohol exposure: service model and assessment outcomes
Gregory G (Peterborough, UK), Danieli A, Weisblatt E
- P2_07 Same fiatuas of diagnosing depression in children at pre-puberty
Proskurina T (Kharkov, Ukraine), Mykhailova E, Bagatska N, Reshetovska N
- P2_08 “Mind-Body Awareness” in primary schools: gender influence on emotional awareness training based on Theory of Mind
Rossi M (Milan, Italy), Chiappale C, Micco P, Marchetti A, Rossi S, Ciaramella A

Chronic Pain

Chair: A. Ciaramella (Pisa, Italy)

- P2_09 Psychological disorders as possible factors for algodysfunctional temporomandibular joint syndrome
Chisnoiu AM (Cluj-Napoca, Romania), Picos A, Chisnoiu RM, Picos AM
- P2_10 Evaluation of an extended psychosomatic module in context of an orthopedic pain therapy for chronic low back pain
Galle M (Dresden, Germany), Heinicke C, Ettrich U, Zimmermann K, Hansske A, Weidner K

- P2_11 How useful is Quantitative Sensory Testing in patients with neuropathic pain?
Sannino C (Pisa, Italy), Del Sole D, La Manna M, Poli P, Stampacchia G, Carli G, Ciaramella A

- P2_12 Pathogenetic psychosomatic mechanisms in chronic pain: gender differences among syndromes
Ciaramella A (Pisa, Italy), Poli P

Cultural Aspects/ Countrywise developments in Psychosomatic Medicine

Chair: R. Burian (Berlin, Germany)

- P2_13 Lights and shadows over Spanish CL Services and training: 2000-2015
Campos R (Zaragoza, Spain), Marco Carlos Ventura Tirso Gómez-Reino I, Bosqued L, Latorre P, Serrano M, Perez C, Lobo A
- P2_14 An overview of Consultation / Liaison Psychiatry in Kosova - future perspectives
Ibishi N (Prishtina, Kosovo), Musliu N, Hundozi Z, Goci A, Obertinca B
- P2_15 Developing a model of basic psychosomatic treatment for a country so far without special structures
Loew TH (Regensburg, Germany)
- P2_16 First year of a C-L Psychiatry Training Program in a Brazilian Teaching Hospital - Trends and Challenges
Victor Luna JV (Recife, Brazil), Boxwell S, Cribari I, Bouwman M, Kelner G
- P2_17 Ethnicity as a potential barrier to pre-transplant evaluation in a Canadian setting
Bansal A (Toronto, Canada), Michael J, Novak M, Waterman A, Famure O, Kim JS, Mucsi I
- P2_18 A cultural competent model of psychiatric care for migrants in Bologna, Italy
Tarricone I (Bologna, Italy), Callegari P, Mancini MG, Crudele R, Marchetta M, Sutti E, Gamberini L, Triolo F, Storbini V, Chierzi F, Berardi D
- P2_19 Cardiovascular comorbidities associated with major depressive disorder and anxiety are a major burden for the Romanian health system
Ciorica IGM (Bucharest, Romania)
- P2_20 Management of depression in the British South Asian and British white patients with long-term conditions in primary care: A cross sectional study
Anand A (Manchester, UK), Bhojani I, Patel S, Lunat F, Gire N, Chaudhry N, Husain N

Gender Specifics in Psychosomatic Medicine*Chair: B. Stein (Nuremberg, Germany)*

- P2_21 Psychosomatic aspects in women undergoing breast reconstruction with latissimus dorsi flap
Dumitrascu DI (Cluj, Romania), Georgescu AV
- P2_22 The effects of vitamin B1 on the mental and behavioral symptoms related to Premenstrual Syndrome
Abdollahifard S (Jahrom, Iran)
- P2_23 Childhood trauma and postpartum depression
De Venter M (Edegem, Belgium), Smets J, Raes F, Wouters K, Franck E, Hanssens M, Jacquemyn Y, Sabbe B, Van Den Eede F
- P2_24 Oxytocin response to an attachment-related stressor in women with respect to depressive symptoms.
Brisch KH (Munich, Germany), Quehenberger J, Oberschneider L
- P2_25 Psychological morbidity in breast cancer survivors: Prevalence-rates and determinants
Oberguggenberger A (Innsbruck, Austria), Meraner V, Sztankay M, Mangweth-Matzek B, Gamper E, Wintner L, Beer B, Hubalek M, Huber N, Sperner-Unterweger B
- P2_26 Human papilloma viruses infection and male infertility
Abdollahifard S (Jahrom, Iran), Maddahfar M
- P2_27 Sex-specific differences in pruritus perception modulated by placebo and nocebo instructions in relation to the experimenter's sex
Stumpf A (Münster, Germany), Zerey V, Heuft G, Ständer S, Pfeleiderer B, Schneider G

Neuropsychiatry & ADHD**NP***Chair: A. Conca (Bolzano, Italy)*

- P2_28 Emotional intelligence, personality and quality of life: a comparison between newly diagnosed MS patients and a healthy control group
Etesam F (Tehran, Iran) et al.
- P2_29 EEG – correlates as biomarkers in Chronic Fatigue Syndrome
Maldonado J (Stanford, USA)
- P2_30 Neuropsychiatric complications of disulfiram intoxication – a case report and a brief review of the literature
Takacs R (Budapest, Hungary), Milan F, Gazdag G

- P2_31 Auditory release hallucinations in hearing impairment
Wai J (New York, USA), Gonzalez-Alonso R, Forman H
- P2_32 Postoperative delirium incidence, risk factors and outcome
Sirvinskas E (Kaunas, Lithuania), Andrejaitiene J
- P2_33 Impact of delirium in the morbidity, survival, and functioning of lung transplant patients
Maldonado J (Stanford, USA)
- P2_34 Psychiatric comorbidity in persons living with HIV
Toro P (Santiago de Chile, Chile), Ceballos ME, Calderon J, Gonzalez M, Schröder J

Primary Care*Chair: H.-C. Deter (Berlin, Germany)*

- P2_35 Cognitive-behavioral intervention in primary care for undifferentiated somatoform disorder
Sitnikova K (Amsterdam, The Netherlands), Leone S, Van Marwijk H, Bosmans J, Van Der Wouden J, Van Der Horst H
- P2_36 Is low blood pressure always healthy? Evidence of an inverse association between depressive symptoms and arterial blood pressure in a primary care sample
Rioli G (Modena, Italy), Mattei G, Galeazzi GM, Ferrari S, Bursi S, Pingani L, Rigatelli M
- P2_37 Cough variant asthma patients are more depressed and anxious than classic asthma patients
Saito N (Aomori, Japan), Itoga M, Tamaki M, Yamamoto A, Kayaba H
- P2_38 Beliefs and opinions of primary care patients in long-term medication treatment for anxiety and/or depression
Peggi M (Modena, Italy), Andreoli M, Mattei G, Ferrari S
- P2_39 Is hyperglycemia associated with anxious-depressive symptoms? An Italian study in primary care setting
Rioli G (Modena, Italy), Mattei G, Galeazzi GM, Ferrari S, Bursi S, Pingani L, Rigatelli M
- P2_40 Providing advice on complementary and alternative medicine through oncologists – a qualitative analysis
Güthlin C (Frankfurt am Main, Germany), Klein G, Horneber M

Psychosomatic Medicine in Cardiology

Chair: C. Albus (Cologne, Germany)

- P2_41 Psychological factors associated with change in chest pain level following treatment of panic disorder in emergency department patients with non cardiac chest pain.
Foldes-Busque G (Quebec, Canada), Denis I, Tremblay M-A, Fleet R, Archambault P, Dionne C
- P2_42 Emotional well-being of patients before and after implantation of a left-ventricular assist device
Ferentzi H (Berlin, Germany), Albert W, Ziemke M
- P2_43 Anxiety symptoms can predict HRQoL decline among outpatients with Chronic Heart Failure
Ibishi N (Prishtina, Kosovo), Musliu N, Hundozi Z, Goci A, Obertinca B
- P2_44 Clinically significant complaints of noncardiac chest pain in emergency department patients: prevalence and associated characteristics
Foldes-Busque G (Quebec, Canada), Denis I, Tremblay M-A, Fleet R, Archambault P, Dionne C
- P2_45 Base rates of depressive and anxious symptoms in patients with coronary heart disease
Kohlmann S (Hamburg, Germany), Gierk B, Scholl A, Murray A, Lehmann M, Löwe B
- P2_46 Integrated care in cardiology: needs, demands and therapeutic strategies
Kunschitz E (Vienna, Austria), Friedrich O, Sipötz J
- P2_47 Psychosocial and psychosomatic aspects of young adult well-being after pediatric heart transplantation
Ziemke M (Berlin, Germany), Ferentzi H, Hudalla A, Traue K, Albert W
- P2_48 PHQ-2 and GAD-2 scores predict mortality in patients undergoing oral anticoagulation
Michal M (Mainz, Germany), Schulz A, Coldewey M, Göbel S, Prochaska J, Ullmann A, Beutel ME, Keller K, Lamparter H, Münzel T, Reiner I, Wild PS

Psychotherapy with the Medically Ill II

PT

Chair: F. Geiser (Bonn, Germany)

- P2_49 Addressing unhealthy lifestyle in psychodynamic psychotherapy
Michal M (Mainz, Germany), Subic-Wrana C, Beutel M
- P2_50 Attachment representation in the AAI during inpatient psychotherapy
Reiner I (Mainz, Germany), Fremmer-Bombik E, Trojan G, Michal M, Beutel M
- P2_51 Emotion modulation in mental disorders – who needs psychoeducation in handling with music media?
Gebhardt S (Marburg, Germany), Kunkel M, Von Georgi R
- P2_52 Inpatient Psychosomatic Medicine for the whole family – An example from Germany.
Leinberger B (Regensburg, Germany), Mumm R, Tritt K, Loew T
- P2_53 Importance of psychosocial approach to diabetes treatment
Sedlar A (Belgrade, Serbia), Pudar G
- P2_54 Effects of stress management program on mental health of patients with coronary heart disease
Aghajani M (Kashan, Iran), Asgarian F, Bashiri Z

Social Environment and Psychosomatic Disorders

Chair: J. Jenewein (Zürich, Switzerland)

- P2_55 Evaluation of a salutogenetic concept for inpatient psychosomatic treatment
Hinterberger T (Regensburg, Germany), Auer J, Loew TH
- P2_56 Referral patterns to inpatient consultation liaison service in a general hospital in Singapore
Cheang KM (Singapore, Singapore), Chan KL
- P2_57 Loneliness in the elderly is associated with the use of psychotropic drugs
Boehlen F (Heidelberg, Germany), Herzog W, Quinzler R, Haefeli W, Maatouk I, Niehoff D, Saum K-U, Brenner H, Wild B
- P2_58 A realistic therapeutic goal of elderly patients with hypochondriac patients – in terms of outpatient Morita Therapy
Ohta D (Tokyo, Japan), Tateno A, Tereda H, Yamada U
- P2_59 The assessment of decisional capacity in advanced age: Medical and psychiatric characteristics and the ability to make health care decisions
Boettger S (Zurich, Switzerland), Boettger S, Bergman M, Jennewein J
- P2_60 Prevalence of psychiatric disorders in homeless population
Gazdag G (Budapest, Hungary), Braun E

Somatic Symptom/Somatoform Disorders**SOM***Chair: H. Sattel (Munich, Germany)*

- P2_61 Differences in psychodynamic diagnostics between patients with burnout-syndrome and patients with somatoform disorders
Beyer VM (Nuremberg, Germany), Behringer J, Tuffner D, Söllner W
- P2_62 Cognitive Rehabilitation Treatment for mental slowness in Conversion Disorder. A case report
De Vroeghe L (Tilburg, The Netherlands), Van Der Feltz-Cornelis C, Khasho D
- P2_63 Patient-tailored modular treatment for patients with multiorgan bodily distress syndrome: A pilot study with focus on heterogeneity
Frølund Pedersen H (Aarhus, Denmark), Frostholm L, Fjordback L, Rehfeldt E, Fink P, Schröder A
- P2_64 Functional limitations in functional somatic syndromes and recognized somatic diseases. Results from the general population cohort LifeLines.
Joustra ML (Groningen, The Netherlands), Janssens KA, Bültmann U, Rosmalen JG
- P2_65 Neuroticism and maladaptive coping among patients with functional somatic syndromes
Frølund Pedersen H (Aarhus, Denmark), Frostholm LB, Oernboel E, Jensen J, Søndergaard, Schröder A
- P2_66 Physical comorbidity in patients with severe functional somatic syndromes. A register study
Skovenborg E (Aarhus, Denmark), Høeg M, Ørnboel E, Rask C, Schröder A
- P2_67 Medically Unexplained Symptoms are related to entry into care, but not to number of treatment contacts for mental problems: a NEMESIS-2 study.
van Eck van der Sluijs J (Tilburg, The Netherlands), ten Have M, Rijnders C, van Marwijk H, de Graaf R, van der Feltz-Cornelis C

Supportive Care & Outcome in Organ Transplantation**TM***Chair: P. Zimbrea (New Haven, USA)*

- P2_68 Psychological support for patients and donor families
Bellew M (Leeds, UK)
- P2_69 An update on organ transplantation in Hungary
Gazdag G (Budapest, Hungary)
- P2_70 Update on vascularized composite allotransplantation
Jowsey-Gregoire S (Rochester, USA)
- P2_71 The facial transplantation experience through the eyes of the patient and the partner: Preliminary Results of an interpretative phenomenological study
Lemmens GMD (Ghent, The Netherlands), Hendrickx H, Van Parys H, Poppe C, Roche NA, Peeters PC, Vermeersch HF, Rogiers X, Van Lierde K, Blondeel PN
- P2_72 Psychiatric and medical adverse events for kidney transplant recipients with lithium induced kidney disease
Formica R (New Haven, USA), Asch W, Letieri D, Kulkarni S, Mulligan D
- P2_73 Living donor outcomes following recipient graft loss or death
Jowsey-Gregoire S (Rochester, USA), Schneekloth T, Niazi S, Vasquez A

THURSDAY JULY 2ND, 2015

8:30 – 11:45 Carus Master Class COL Conference Room 2

Research on Implementation and Outcome of Models of Collaborative Care
 Chair: J. Unützer (Seattle, USA)



In this master class, we will explore research questions, research methods, and practical tips for research on collaborative care. Research questions will include questions about practice settings, target conditions and populations, and questions about the reach and the effectiveness of different collaborative care programs. Research methods explored will range from study design to sampling, intervention design and implementation, and evaluation. Finally, we will explore the involvement of key stakeholders in the study design, implementation, and in the effective communication and dissemination of research findings. We will use two examples of current collaborative care studies to illustrate key questions, including a study of collaborative care for high risk mothers in primary care and a large-scale study of implementing collaborative care programs in over 80 clinics. Workshop participants will also be encouraged to bring their own study questions about collaborative care research and we will use these as examples to illustrate key research questions and methods.

8:30 – 11:45 Carus Master Class EC Conference Room 3

Symptoms Research in Psychosomatic Medicine - Conducting Practical Clinical Trials

Chair: K. Kroenke (Indianapolis, USA)



This will be an interactive workshop in which the instructor will weave in practical suggestions about designing and conducting symptom-focused intervention studies while discussing projects in development by the workshop participants. While clinical researchers often target specific diseases, much of what patients experience and report are symptoms which are not specific to a particular disease but instead cut across most medical and psychological disorders. Examples include somatic symptoms (e.g., pain, fatigue, insomnia, and symptoms related to the gastrointestinal, cardiopulmonary, neurological, or genitourinary systems) as well as mood symptoms (e.g., depression, anxiety). These are ideal targets for psychosomatic researchers.

Based upon his experience in conducting more than a dozen pragmatic trials focused on somatic and psychological symptoms, Professor Kroenke will cover a variety of topics including: 1) Designing the intervention; 2) Choosing an appropriate control arm; 3) Selecting primary and secondary measures; 4) Defining the patient sample; 5) Recruiting and retaining subjects; 6) Minimizing confounding and bias; 7) Addressing human subjects issues; 8) Contemplating alternatives to a parallel group design. Workshop participants will be encouraged to submit questions about their own projects in advance of the session as well as raise topics to discuss during the workshop itself. The goals of the workshop are to increase the knowledge, skills, and confidence of participants in carrying out their own intervention studies.

8:30 – 11:45 Carus Master Class NP Conference Room 4

Neurobiological Research Methods in Psychosomatic Medicine: New Perspectives.

Chairs: J. Rundell (Rochester, USA), U. Malt (Oslo, Norway), T. Elvsåshagen (Oslo, Norway)



During the first part of this course, Dr. Elvsåshagen and Dr. Malt will discuss the role of neuroplasticity and neurogenesis in psychosomatic disorders and how it can be measured in patients using own ongoing studies on mood disorders as an example. Techniques to be addressed include MRI based thickness and morphometric measures of cortex areas of particular interest in psychosomatic medicine, MRI based techniques to measure ongoing neurogenesis and electrophysiological measures of synaptic plasticity. The participants will be given opportunity to discuss own ideas and research in relation to these topics. During the second part of the course, dr. Rundell will review the current status of the worldwide literature on the neurobiology of posttraumatic stress disorder, stratifying the collective findings by quality of evidence, and reviewing how the quality of evidence is defined. He will use illustrative examples of PTSD structural, neuropsychological and functional neuroimaging studies to demonstrate the strengths and potential confounders of neuropsychiatric research. Finally, he will review research frontiers in PTSD, engaging the attendees in discussion about methodological opportunities and barriers.

8:30 – 10:00 Carus Master Class COL Conference Room 5

Stop Wasting Money! How to Deploy Integrated Medical and Psychiatric Services with Clinical and Economic Value

Chairs: R. G. Kathol (Minneapolis/Brunsville, USA), C. Lattimer (Little Rock, USA)



Medical and psychosomatic conditions interact and lead to predictably worse clinical outcomes, functional impairment, and higher health care costs with persistent medical and psychosomatic symptoms, yet internationally medical and psychiatric services are provided independently as if the interaction and need for care coordination did not exist.

This symposium

- discusses data on clinical and economic outcomes of the current segregated approach to medical and psychosomatic care delivery
- defines medical and psychosomatic integration
- reviews inpatient and outpatient models with clinical and economic promise.

- summarizes the roles of psychosomatic specialists and other medical practitioners in transitioning to integrated systems with better health and cost outcomes for patients with comorbid medical and psychosomatic conditions
- Since patients with concurrent medical and psychosomatic conditions often have health complexity, the symposia will also present information about an important enhancement to traditional disease-oriented care, i.e., biopsychosocial and health system assistance and support services provided by collaborating health professionals, such as nurses and social workers.

Research now indicates that 10% of patients use 70% of health resources. Sixty to eighty percent of these patients have concurrent medical and psychosomatic illnesses but are seen primarily, if not exclusively, in the medical setting. During the past 20 years, promising models of integrated care have emerged, however, few know the data about which add value and even fewer are aware of the transition steps that leadership in psychosomatics should take to improve health and cost outcomes, including the use of assist and support services by nurses and social workers.

Health services research provides direction for those wishing to provide access to services that improve health and cost outcomes for these patients. This symposium discusses why steps should be taken and how to start.

8:30 – 11:45

Clinical Course

PT

Conference Room 6

Intensive Short-term Dynamic Psychotherapy: An Introduction to the Method Demonstrated by Audiovisually-Recorded Interviews with a Patient with Somatization Disorder

Chair: I. Ostertag (Nuremberg, Germany)



The focus of this workshop is on history, theory, technique and metapsychology of Intensive Short-term Dynamic Psychotherapy (IS-TDP) which has been developed by Habib Davanloo, professor emeritus of psychiatry at McGill University in Montreal over more than 50 years and which is based on empirical research using video- technology. The standard technique is effective for patients suffering from phobic, obsessional, depressive, panic disorders, posttraumatic stress disorders and somatization and - with some modifications - for patients with fragile character and structural pathology. What makes the method so effective? Transference is the key. Concentrating on emotions in the transference, the therapist mobilizes conscious and unconscious therapeutic alliance, complex transference feelings, unconscious anxiety and resistances. Dealing actively with these dynamic components, the therapist will strengthen the patient's resources. The patient will be able to face his repressed intense feelings (rage, guilt, grief and loving feelings) in direction of the therapist. The "Break-through into the Unconscious" will lead to a specific traumatic experience, which then can be worked through in relation to important figures of the past. This provides a direct insight into the psychopathological dynamic forces which are responsible for symptoms and character disturbances, leading to a relief of the symptoms and to multidimensional structural changes in the patient. Several studies show good clinical evidence and cost effectiveness of this method

corroborating Davanloo's pioneering research. By demonstrating audiovisually-recorded interviews with a patient with somatization disorder the participants of this workshop will experience a vivid introduction in the practical work with IS-TDP.

8:30 – 11:45

Clinical Course

NP

Conference Room 7

Update of Psychopharmacological Treatment of Medically Ill Patients

Chair: J. Levenson (Richmond, USA)



10:15 – 11:45

Clinical Course

PT

Conference Room 5

Family Therapy For Adolescents With Functional Somatic Symptoms: A Systemic Narrative Approach on a Biopsychosocial Foundation

Chair: G. Dehlholm (Denmark)

FSS are common in children and adolescents, resulting in significant morbidity and health expenses. In daily clinical practice there is limited consensus regarding the treatment. To understand FSS, a biopsychosocial framework is generally accepted. This includes biological, psychological and social elements with special emphasis on the significance of family factors. Thus there is an increasing focus on interventions targeting family processes, and the empirical support for family-based treatment for children with mental health problems is growing. However, research is challenged by the fact that "family therapy" is based on a broad definition, which encompasses a wide range of interventions with theoretical and technical eclecticism dominating the field. Research in adults shows that psychological treatment is effective for FSS. According to children and adolescents there is a growing evidence on the effect of psychological treatment. At the department of Child and Adolescent Psychiatry, University Hospital of Southern Denmark, a team of experienced therapists has developed an approach for the treatment of adolescents with FSS. This approach includes a formalized and well-established collaboration with the Pediatric department, University Hospital of Southern Denmark. The treatment is based on a biopsychosocial understanding combined with family therapy with elements of systemic and narrative theories.

Objective:

- Presentation of the family therapy approach used in the department of Child and Adolescent Psychiatry, University Hospital of Southern Denmark.
- Discussion of different approaches to family therapy for adolescents with functional somatic symptoms
- Discussion of challenges and advantages of a systemic narrative approach to families of adolescents with functional somatic symptoms

FRIDAY JULY 3RD, 2015

8:00 – 9:00

Workshop

Conference Room 1

Violence Towards Care Providers in the General Hospital: Strategies for Assessment, Treatment, Safety, and Risk Reduction

Chair: R. Brendel (Boston, USA), J. Rundell (Rochester, USA)

Health care workers face a high rate of workplace violence. Although care providers frequently minimize or discount assaults by patients as illness-related and routine in the course of care, there are nonetheless risks of injury to both patients and staff. In addition, caring for assaultive patients is often resource intensive and may be associated with long length of stay and challenges for discharge. Especially when care providers perceive violence or assaultiveness by a patient as unmanageable, unending, and/ or intentional, there may be a desire to take legal action in hopes of effecting a solution to caring for a challenging patient. This workshop will address the evidence base for pharmacologic treatment/ reduction of violence in the medically ill patient, present practical strategies for managing the assaultive/ violent patient, and incorporate forensic considerations in managing the assaultive patient in medical and surgical settings. Understanding Violence and Aggression: The Evidence Base for Psychosomatic Medicine Practice, James Rundell MD: Dr. Rundell will present key findings of the recent APM and EAPM Monograph on Violence and Aggression. The presentation will focus on assessing the status of the literature regarding pharmacologic management of aggression and violence.

In the Trenches: Practical Strategies for Managing Violence in the General Hospital, Rebecca Weintraub Brendel MD, JD: Dr. Brendel will discuss risk assessment and management from behavioral and the factors that may contribute to staff seeking legal options for managing an assaultive/ violent patient. A practical framework incorporating clinical and legal (U.S.) factors will be considered.

Discussion: Drs. Rundell and Brendel will lead a question, answer, and discussion period following their presentations.

Learning Objectives:

- Participants will appreciate the risk factors for violence and aggression in the general hospital.
- Participants will achieve a functional understanding of the evidence base informing assessment and management of assaultive/ violent patients.
- Participants will gain a practical framework for understanding and managing clinical and forensic considerations raised by the assaultive/ violent patient.

8:00 – 9:00

Workshop

Conference Room 2

The ICD-10-Symptom-Rating-Plus (ISR+)

Chair: K. Tritt (Regensburg, Germany), M. Zaudig, F. von Heymann, T. Loew, W. Söllner

The ISR+, as a standardized diagnostic tool, aims at guiding the clinician through the variety of different diagnostic criteria of the over 850 specific diagnoses of the ICD-10 as easily and quickly as possible while at the same time improving the quality of the diagnostic process. The development of this ISR+ software program, which will be made available free of charge and without requiring any license fees, will be presented.

Methods: This software is based on a reconstruction of the different diagnostic algorithms of the ICD-10 and leads the clinician step for step through the syndrome modules (diagnostic algorithms). Only those modules that are relevant for a specific patient are evaluated each time. The different syndrome modules cover the diagnostic criteria belonging to the specific syndrome. The severity of the diagnostic ICD-10-criteria that were viewed as suitable for self-rating through patients, are evaluated prior to the clinician rating by the patient. These patient ratings are graphically presented to the clinician while performing the clinician rating as additional information. It has to be stressed though that this software should merely be viewed as an assistance for the clinician. The clinician is fully responsible for diagnostic decision making. Finally through repeated use of this software, the clinician should become more and more acquainted with the different diagnostic criteria of the ICD-10.

Discussion: Assuming that only approx. 2-3 syndrome modules need to be rated on average per patient, diagnosing with the ISR+ should – in comparison to other standardized diagnoses systems – be achieved quicker. At the same time the instrument should improve the quality of clinical diagnoses.

8:00 – 9:00

Workshop

PT

Conference Room 3

The Patient Holds the Key - Idiolectics as an Innovative Interviewing Technique for Effectively Activating Patients Participation in the Therapeutic Process Following Their Idiosyncratic language

Chair: T. Rentel (Erlangen, Germany)

87 % of the therapeutic outcome depends on the client and extratherapeutic factors, while the therapist, the model and technique itself contributes only about 13 % to the overall outcome. „The quality of the patient’s participation ... (emerges) as the most important determinant of outcome“ (Orlinsky et al., 2004). Duncan (Duncan, 2010) advises therapists to privilege clients’ experience and rally their resources to the cause. Therapists should use client feedback as a compass in the adventure of the idiosyncratic trip across the uncharted territory of the clients inner landscapes.

The patients idiosyncratic use of his language patterns is called idiolect. It is the pattern of language or speech that a person uses, including all of his phonetic, grammatical, and word

choice preferences. The idiolect as the unique „fingerprint“ of each person contains valuable references to the implicit knowledge and unconscious patterns of this person. Idiolectics is the methodical, painstaking, and precise handling of idiolect. The idiolectic approach is marked by the uncompromising recognition of the viewpoint of the other. The questioning technique is characterized by simple, short, and open questions, in which the idiolect of the conversational partner is taken up, is seized upon. Here special attention is given to the imagery of the language and to nonverbal signals as a microprocessual feedback.

Self-consciousness, self-worth and self-efficacy are improved implicitly by this way of idiolectic dialogue because the patient is appreciated as expert concerning his unique way of experiencing his symptoms. Idiolectics is empowering patients to access their own capacities for growth. Especially in the treatment of patients with fixed somatic disease concepts or in patients with organic diseases plus psychosomatic symptoms this improves the rapport as well as the outcome of the treatment.

Aim of the workshop: Getting acquainted with the attitude and the basics principles of the idiolectic interview. Asking open, resource-oriented, short questions referring to the exact words the patient uses to describe his symptoms. Didactics: Sshort input concerning idiolect and idiolectics with case histories. Live-interviews and exercises under supervision.

8:00 – 9:00

Workshop

COM

Conference Room 7

Teaching and assessment of communication skills in medicine – from national to European concepts

Chair: J. Jünger (Heidelberg, Germany)

Physician-patient communication has become increasingly recognized as a core element of patient care. Accordingly, several medical faculties in different European countries have started to integrate the teaching of communication skills into their curricula. However, these communication curricula are largely heterogeneous both between and within European countries. An example for a national initiative to align the different communication curricula in medical education is currently conducted in Germany under the support of the Federal Ministry of Health. This project aims to develop a template for a national, longitudinal communication curriculum in medicine.

In the present working group we aim to broaden the focus beyond the national level and find partners to discuss and compare communication curricula on the European level. Thereby it would be especially important to involve interested partners from psychosomatic medicine in light of this discipline's engagement and competence regarding communication skills in medicine. We would like to exchange experiences, ideas and concepts as to how the teaching and assessment of communication skills in medical education is realized in other European countries. Thereby, a special emphasis will lie on the integration of communication skills in clinical specialist areas. In the long run, the present initiative serves to collect and develop key concepts and finally, align the education of communication skills in medical curricula on the European level.

11:00 – 12:30

Workshop

PT

Conference Room 7

Psychodynamic Bedside Teaching

Chairs: K. Philbrick (Rochester MN, USA), M. Beutel (Mainz, Germany), B. Stein (Nuremberg, Germany)

Aims: The workshop will address two questions: 1) How does dynamically informed consultation provide added value for patients and colleagues? 2) How can we cultivate the development of this skill set in trainees? Introduction: The EAPM and APM both support training C-L psychiatrists and psychosomatists to carry out psychodynamically-informed assessments of how patients unconsciously shape the meaning of their illness and the challenge to press on in life. Faced with multiple competing pressures to efficiently care for medical patients, C-L psychiatrists and allied health professionals will better meet the needs of their patients if they are equipped to listen and think through the whole meaning of the patient's illness and suffering. Methods: We will address these issues through presentation and discussion of two cases that illustrate the advantage provided by dynamically informed consultation. A panel of experienced and analytically trained C-L experts will show how a psychodynamic understanding of powerful emotional responses in both (a) the patient and his or her relatives and (b) the ward's medical team and the consultant, enables the examination of transference and counter-transference phenomena and underlying unconscious conflicts. Discussion: In conclusion, audience participation in discussion of methods whereby residency and fellowship programs can potentially strengthen the ability and comfort of trainees to integrate dynamic formulation into their consultative work will be actively encouraged.

11:00 – 12:30

Workshop

EC

Conference Room 5

How to Get Your Paper Published: the Editors' Point of View

Chair: A.F.G. Leentjens (Maastricht, The Netherlands)

This workshop deals with the basics of writing a scientific article and how to get it published. The workshop is focused on young researchers and in this interactive setting, attendants will learn from an editors perspective, how they can write and submit articles that warrant publication, as well as the common flaws and errors that contribute to rejections. Stages of research relevant for later publication of results will be discussed, including initial conception of a research idea, ethical considerations, designing and conducting research, conducting analyses, reporting results and drawing conclusions. Moreover, aspects of the writing of the paper itself, and its subsequent submission to a journal will be discussed.

15:15 – 16:45

Workshop

EC

Conference Room 3

When is Suicide Something Else? Suicide Assessment and Management in Medical/Surgical Settings

Chair: J. M. Bostwick (Rochester, Minnesota , USA)

One of the most common consults a psychosomatic service working in medical/surgical settings receives is a request for evaluation of suicidality. While patients have often made suicide attempts that have resulted in med/surg hospitalization, other patients voice suicidal ideation that communicates distress about any number of situations that afflict the hospitalized seriously ill. In this symposium, we will a) review what is known about suicidality in medical/surgical settings, b) discuss the concept of scripts that may underlie suicidal plans or acts, c) explore a model for reclassifying so-called "suicide" as other phenomena according to the presence or absence of collaboration and desire to hasten death, and d) present videotaped case examples that illustrate all these points for group discussion. We will emphasize throughout the workshop how the psychosomatic process of integrating patients' subjective narratives and objective medical/surgical presentations leads to new understandings and approaches to understanding their suicidality.

Participants will:

- 1) understand the diverse presentations of suicidality in the medical/surgical setting
- 2) appreciate the value of suicide scripts in characterizing motives underlying suicidal behavior
- 3) realize how suicidal ideation is a communication of distress that – if addressed – often eliminates the suicidal ideation

SPECIAL LECTURES IN THE HISTORIC COURT YARD 600 MEMORIUM NUREMBERG TRIALS – TICKETED EVENT

Wednesday, July 1, 2015
19:00

We kindly invite you to the special lectures by Prof. Leven and Prof. Dimsdale in the historic Courtyard 600 in Nuremberg.



Anatomy of Malice: the Rorschachs of Nuremberg

Joel E. Dimsdale, M.D., San Diego, USA

Seventy years ago the International Military Tribunal in Nuremberg conducted an almost yearlong trial of the leading Nazi war criminals. Affiliated with the court were Douglas Kelley, M.D. psychiatrist and Gustave Gilbert, Ph.D psychologist. They had the audacious idea of studying the Nazi leaders' malice with Rorschach tests. Their findings have been mired in controversy, lawsuits, and, sadly, suicide, but finally these moldering tests have been released.

This lecture will discuss how Kelley and Gilbert viewed the psychological states of Robert Ley, Hermann Goering, Julius Streicher, and Rudolf Hess and will frame the observations from the context of contemporary research in social psychology and neuroscience.

The Nuremberg Medicial Trial – Lessons to Learn

Karl-Heinz Leven, Erlangen, Germany

The Nuremberg Medical Trial (1946/47), initiated by the US, stands as the paradigm example for the symbolic value of justice vs. medical crimes. The trial itself has by now accomplished a history of decades; its direct effects in contemporary German and international medicine have to be discerned from longterm effects, especially concerning the reception of NS-medicine in Germany since the 1980s and concerning international research ethics via the "Nuremberg Code", originally being part of the sentence at Nuremberg in 1947.

Address: Memorium Nuremberg Trials, Bärenschanzstraße 72, 90429 Nuremberg

Bus Transfer: Bus transfer at 18:15 from the Conference Venue Meistersingerhalle to the Memorium will be offered (appr. 30 min.)

GET TOGETHER

Wednesday, July 1, 2015
17:00

Thursday, July 2, 2015
19:15

Enjoy canapés and a glass of wine with your colleagues and friends in the Meistersingerhalle Nuremberg.

CONFERENCE DINNER & PARTY

Friday, July 3, 2015
20:00

Altes Rathaus Nuremberg (Town Hall) – Ticketed Event

The conference dinner will take place in the old town hall. After a three course dinner, the conference party will continue on the ground floor with music and dance.

The cost of the dinner is 75 €. This price includes beverages during the three course meal, and the meal itself. If you have not booked the dinner at registration and want to participate, please go to the reception desk.

The evening will be accompanied by **Doc Horn & The Hornbabes** Doc Horn & The Hornbabes persuade with their easy going Rock’n’Roll! The nine person band from Berlin, of which one is a long time EAPM member, play together since 2013 and will make the evening unforgettable.

Address: Altes Rathaus, Rathausplatz 2, 90403 Nürnberg

Bus Transfer: Bus transfer at 19:30 from the Conference Venue Meistersingerhalle to the Nuremberg Town Hall (Altes Rathaus) will be offered (appr. 20 min.).

Diet requirements: If you prefer a glutenfree meal please contact the registration desk in order for us to make arrangements.



AIRPORT

For information on arrivals and departures by plane and connecting busses, please see

Albrecht Dürer Airport Nürnberg —> www.airport-nuernberg.de
Munich Airport —> www.munich-airport.de

The **U2** subway line directly connects Nuremberg Airport with the central train station thus providing access to Nuremberg’s city center in just 12 minutes!

BADGES

The name badge and tickets, which you receive upon registration, are your admission to all scientific sessions, lunches and beverages. Please wear your name badge on all occasions. If your badge is lost, please contact the registration desk.

BREAKS & EXHIBITIONS

During the breaks, beverages will be provided in the Foyer and Bistro of the Meistersingerhalle. Lunch is included in the conference fee on Wednesday and Friday. Lunch on Thursday will be offered on a customerpaid basis in the Bistro. A restaurant is available in the Ramada Hotel next to the conference venue. Exhibitions by our sponsors will be located in the Foyer.

CHAIRS

We kindly ask the chairs to be present in their session 10 minutes prior to the beginning of the session.

CREDIT CARD / CASH POINTS

After banking hours, cash points accepting major credit cards are conveniently located all over the city. The closest cash point from the Meistersingerhalle is located in **Address:** Commerzbank, Allersberger Straße 45, 90461 Nürnberg

EMERGENCY NUMBERS

Police: 110
Ambulance: 112

LOST & FOUND

Please go to the registration desk if you lose or find something.

MEETING VENUES



Conference Venue
Meistersingerhalle
Address: Münchener Straße 21, 90478 Nürnberg



Special Lectures Venue
Memorium Nuremberg Trials
Address: Bärenschanzstraße 72, 90429 Nürnberg



Conference Dinner Venue
Altes Rathaus (Old Townhall)
Address: Rathausplatz 2, 90403 Nürnberg

MEDIA CHECK

All presenters are asked to check in their power point presentation at the media check. The media check is located opposite the registration desk —> Media Collection.

OFFICIAL LANGUAGE

English

ORGANIZING SOCIETIES

The 3rd Annual Scientific Conference of the European Association of Psychosomatic Medicine (EAPM) is organized by the EAPM. The joint pre-conference scientific meeting is organized by the EAPM and the Academy of Psychosomatic Medicine (APM).

PARKING

There are numerous parking spots available at the Meistersingerhalle.

PRESS CONFERENCE

Date: Thursday, July 2, 2015

Time: 16.45 – 17.45

Location: Room 5

PROGRAM CHANGES

The organizers cannot assume liability for any changes in the program due to external or unforeseen circumstances.

REGISTRATION / INFORMATION DESK

The registration desk is situated in the entrance area of the Meistersingerhalle. Please register as soon as possible after your arrival. The registration desk is open during all conference hours.

SATELLITE SYMPOSIUM

Satellite Symposia are organised by the International Society of Behavioral Medicine (ISBM) and the European Society for Dermatology and Psychiatry (EADaP)

SHOPPING

Shops in Nuremberg are usually open from Monday to Saturday, 09.30 am – 07.00 pm. Supermarkets and department stores are open until 08.00 pm. Sundays closed. Not all shops accept credit cards.

STAFF

EAPM 2015 conference staff will be present during the conference to help you with any questions you may have. A staff member will be present in each room during each session. Staff can be recognized by their black clothing and blue scarf.

INTERNET

WiFi Vouchers are available at the registration desk.

GUIDELINES FOR SPEAKERS

- The supported software for presentation is PowerPoint, Keynote is not allowed
- All presentations will be presented at a resolution of 1024 by 728 pixels
- When using videos, MPG and AVI are the most used video formats. Movies created in (Apple) QuickTime have to be converted to MPG or AVI before inserting the video in your presentation. Save the videos used in your presentation on your CD/USB memory stick.
- Include your conflict interest statement on the first slide.

Parallel Sessions are 90 minutes long (short track – 4 presentations) or 105 minutes long (long track – 5 presentations). Every presenter has approximately 15 minutes for oral presentation plus 5 minutes of discussion.

Technical help & Media Check

A technician will help to transfer your presentation onto the congress network. After completing the transfer, the technician performs a quick run of the presentation so the speaker can check whether the presentation runs correctly and all parts of the presentation are copied. Inside the room of the session, a technical assistant starts every presentation at the right time using a fixed computer connected to the congress network. When the presentation is launched, the speaker has control and can navigate with a remote device.

The use of a personal laptop for presentations is not allowed. If you bring your laptop to the congress, the technician will copy the files to the central congress network. Your laptop will no longer be needed. Of course, the easiest way is to bring your presentation on CD, DVD or memory stick. After the conference, all presentations will be deleted so that no copyright issues will arise.

The Media Check is located in the basement opposite of the registration.

GUIDELINES FOR POSTER PRESENTATIONS

The poster sessions take place in the Foyer of the Meistersingerhalle.

There will be two poster sessions with guided tours for poster discussion during the conference.

- Poster Session 1: Thursday, July 2, 16:45 – 17:30 pm

Please hang up your poster on Thursday, July 2, between 12:00 and 16:00.
Please take your poster down on Friday, July 3, until 12:00.

- Poster Session 2: Saturday, July 4, 10:45 – 11:30

Please hang up your poster on Friday, July 3, between 12:00 and 16:00.
Please take your poster down on Saturday, July 4, after 13:00.

If you do not take down your poster in time, it will be removed by the conference staff. EAPM 2015 is not responsible for any poster left behind at the end of the meeting.

Requirements

Dimensions: Portrait, 90 cm wide, up to 150 cm high. We suggest 90 by 130 cm.

Conflict of Interest: Please include your conflict of interest statement in your poster

Poster Numbers: Please note that the poster numbers in this program refer to the poster number in the guided poster sessions. These numbers are not identical to the abstract number in the Journal of Psychosomatic Research.

ACCREDITATION

The 3rd Annual Scientific Conference of the European Association of Psychosomatic Medicine was granted **21** European CME credits (ECMEC) by the European Accreditation Council for Continuing Medical Education (EACCME).

The Bayerische Landesärztekammer (BLÄK) (Bavarian State Medical Council) has granted the event with the following points

- Pre-Conference July 1: 8 credits
- Special Lectures July 1: 2 credits
- Conference Days July 2 – July 4: 6 credits (each)

Accreditation certificates will be available at the conference desk starting Friday after 3 pm. All participants will receive a certificate of attendance in addition by mail.

WE HOPE YOU ENJOY YOUR STAY IN NUREMBERG!

DISCOVER NUREMBERG WITH A GUIDED WALKING TOUR

Nuremberg was once an imperial residence, a powerful free imperial city and an international trading center. The prosperous city provided the ideal basis for an active cultural and intellectual life and the arts: Even today, numerous buildings, monuments and artworks still reflect its former importance. Walking Tours in English through the Old Town offer information and insights on the churches, the castle, the fountains and wells as well as the city itself past and present.

Dates: Every day (including Sundays) at 1 pm

Meeting Point: Tourist Information am Hauptmarkt

Hauptmarkt 18, 90403 Nürnberg

Tel: +49 911 2336135

NUREMBERG HIGHLIGHTS

The Nuremberg Tourism Center offers a great overview on Nuremberg highlights on their website à <http://tourismus.nuernberg.de>

ALBRECHT DÜRER'S HOUSE

Albrecht Dürer's House, which has recently been restored, presents in a new concept the living and working quarters of one of the most famous painters and graphic artists in art history, namely Albrecht Dürer (1471-1528).

Address: Albrecht-Dürer-Straße 39, 90403 Nürnberg

Phone: +49 (0)911 2312568

DOCUMENTATION CENTRE NAZI PARTY RALLY GROUNDS

The former Nazi Party Rally Grounds are an historical site unlike any other memorial site in Germany. In contrast to the memorial sites within former concentration camps, prisons, etc., reminding us of NS terror and, in turn, of the victims of that tyranny, the area in the southeast district of Nuremberg is a site that was directed at „the taking in of an entire people“ (Ignatz Bubis). This is where the Nazi movement celebrated itself in an almost obscene fashion, presenting an appealing but false picture of their regime to the world. As they openly geared people to war, they sowed the seed that would yield a hideous harvest in the above-named sites.

Address: Fascination and Terror

Documentation Centre Nazi Party Rally Grounds

Bayernstraße 110, 90478 Nuremberg

Phone: +49 (0)911 231 56 66

Opening Hours: Monday to Friday, 9 am – 6 pm; Saturday & Sunday, 10 am – 6 pm;

Last admission 5 pm

GERMANISCHES NATIONALMUSEUM

Since its founding in 1852 the Germanisches Nationalmuseum has advanced to one of the largest museums of cultural history in the German-speaking world.

A visit to this treasure chest is almost obligatory for any trip to Nuremberg. It offers ever new discoveries, even for those who come more often to stroll through cultural history, starting with the Pre- and Protohistory section and ranging all the way to the present. Particular highlights include works of Albrecht Dürer, Veit Stoß and Rembrandt, the earliest surviving terrestrial globe, the first pocket watch in the world as well as the largest collection of historical musical instrument in Europe.

Address: Kartäusergasse 1, 90402 Nürnberg

Phone: +49 (0)911 13310

Opening Hours: Tue – Sun: 10 am – 6 pm; Wed: 10 am – 9 pm

KAISERBURG UND KAISERBURGMUSEUM (IMPERIAL CASTLE + MUSEUM)

The Imperial Castle atop the rocky promontory above Nuremberg was one of the most important fortified imperial palaces of the Old Holy Roman Empire.

Address: Castle Administration | Auf der Burg 13, 90403 Nürnberg

Phone: +49 (0)911 2446590

Opening Hours: daily 9 am - 6pm

LORENZKIRCHE (ST. LAWRENCE CHURCH)

Building begun about 1250. Originally built as a three-aisled basilica in the high Gothic style; later extended with an imposing late Gothic hall choir (1439-1477).

Magnificent west facade with splendid portal richly decorated with statuary and rose window (mid-14th c.). Two towers 80 and 81 meters high. Important works of art: the Annunciation by Veit Stoß (1518), tabernacle by Adam Kraft (1496), medieval altars, memorial plaques, stained glass.

Address: Lorenzer Platz 10, 90402 Nürnberg

Phone: +49 (0)911 24469914

STRASSE DER MENSCHENRECHTE (THE WAY OF HUMAN RIGHTS)

The Way of Human Rights is entered through a stylized triumphal arch from the Kornmarkt and lined by 27, 9-meter-high concrete pillars.



For more information and inspiration see the President's Favorites in the conference bag

NUREMBERG PUBLIC TRANSPORT SYSTEM

Nuremberg offers a greatly developed public transport system. All information can be found on www.vgn.de

Public transport from the conference venue Meistersingerhalle to the city center

- Tram Number 9 “Nürnberg Meistersingerhalle” to “Nürnberg Hbf (Main Station)”
- Underground U1 “Nürnberg Hbf” to “Nürnberg Lorenzkirche”

The prize for a single ticket is 2.60 €. Tickets have to be bought at the machines at the stations.

TAXIS

Numerous taxis are located throughout Nuremberg. The hotel receptionists will be pleased to assist you.

Taxizentrale Nürnberg: +49 911 19410

A

Abdollahifard 70
 Abrahamian 65
 Aghajani 65, 73
 Airagnes 33, 45
 Alba Palé 66
 Albus 34, 72
 Allaz 25, 29, 65
 Alpert 68
 Altaha 68
 Anand 69
 Anderegg 42
 Armean 62
 Asgarian 61
 Avram 61

B

Baban 32, 49
 Bakker 45, 58
 Bansal 69
 Batool 32
 Baumert 28
 Behringer 47
 Bellew 75
 Bendix 30
 Berberich 35
 Beresnavaité 12
 Beresnevaite 34
 Berney 12, 30, 31, 66
 Beutel 12, 44, 57, 83
 Beyer 74
 Bhikha 32
 Bialer 12, 19
 Blanch 27
 Boehlen 73
 Boenink 12, 45
 Boettger 73
 Bonvanie 68
 Bosbach 34
 Bostwick 48, 84
 Bourquin 30
 Brandl 65
 Brendel 40, 80

Breuss 66

Brisch 70
 Broekhuijsen-van Henten 60
 Bühring 40
 Bulbena 12, 51, 62
 Burian 32, 42, 69
 Burri 29
 Burton 49

C

Campos 69
 Campos-Rodenas 50
 Cardoso 12
 Cartiera 29
 Cheang 73
 Chisnoiu 68
 Christiansen 32
 Cianconi 32, 67
 Ciaramella 29, 68, 69
 Ciorica 69
 Claussen 20
 Coffman 29
 Coffmann 29
 Conca 44, 70
 Conrad 29
 Consoli 12, 51
 Creed 46, 58
 Crone 10, 12, 19

D

D'Amelio 44
 Dantzer 41
 De Heer 64
 Dehlholm 25, 79
 de Miranda Azevedo 34
 de Rossi 44
 Deter 12, 25, 31, 71
 De Venter 70
 De Vroege 74
 Diaconescu 61
 Dimsdale 20, 85
 Ditzén 42, 49
 Dumitrascu 12, 32, 61, 70

E

Ehlert 42
 Eliasen 49
 Elvsåshagen 24, 77
 Enck 32
 Estelmann 7, 26
 Etesam 70

F

Fallon 63
 Ferentzi 72
 Ferrari 12, 27, 42, 45, 46
 Fink 12, 31, 49
 Foldes-Busque 72
 Formica 75
 Frankel 27, 40
 Fritzsche 43
 Frølund Pedersen 74

G

Galle 68
 Gamper 62
 Garcia-Campayo 12
 Gazdag 12, 73, 75
 Gebhardt 66, 73
 Geiser 12, 52, 73
 Giel 51, 60
 Gieler 50
 Giupponi 44
 Gregory 68
 Guitteny 27
 Gündel 12
 Gütthlin 71
 Guthrie 12, 43, 57, 64
 Guthry 43

H

Hafliger 29
 Hatta 48
 Henningsen 12, 46, 49
 Herrmann-Lingen 34
 Hinterberger 73
 Hirschfeld 65
 Ho 50

Hoekstra 48

Hornova 63
 Hotopf 30, 48
 Hudson 30
 Huggenberger 52
 Hunter 52
 Husein 32
 Hyphantis 12, 43, 64

I

Ibishi 69, 72
 Isachenkova 42

J

Janssens 41
 Jenewein 12, 52, 73
 Johar 28
 Jordan 43
 Joustra 74
 Jowsey-Gregoire 33, 75
 Juenger 66
 Jünger 30, 40, 82

K

Kaiser 29
 Kalisvaart 60
 Kallay 53
 Kallesøe 35
 Karl 63
 Kathol 12, 25, 46, 77
 Keller 12, 19, 30, 52
 Kempke 64
 Kim 48
 Kishi 48
 Kleinstäuber 27, 47
 Knaevelsrud 57
 Kohlmann 72
 Koraj 60
 Kroenke 24, 46, 76
 Krüger 50
 Kruse 9, 12, 28
 Kumnig 33
 Kunschitz 72
 Kurz 64

L

la Cour 29
 Ladwig 28
 Lammers 51
 Lange 50
 Langewitz 12, 19
 Lattimer 25, 77
 Lau 31
 Laumen 63
 Lee 48
 Leentjens 12, 44, 45, 47, 58, 83
 Leiberich 64
 Leinberger 73
 Lemmens 75
 Leonhart 43
 Leue 12, 63
 Leven 20, 85
 Levenson 12, 25, 26, 45, 79
 Lobo 52, 63
 Loerbroks 58
 Loew 60, 62, 69, 81
 Loewe 46
 Löwe 52
 Lukaschek 28
 Lupasco 64

M

Maldonado 33, 41, 47, 61, 70, 71
 Mallorqui 51
 Malt 12, 24, 58, 63, 77
 Maly 5
 Malyszczak 63
 Matcham 48
 Mattei 33
 Merk 27
 Mertens 32
 Meyer 12
 Michael 65
 Michal 72, 73
 Millán-González 66
 Morar 66
 Moscara 63

Moser 12

Mucsi 12, 45, 59
 Müller 51
 Murray 31

N

Neubauer 64
 Niazi 65
 Niklewski 12, 44
 Nishimura 48
 Noll-Hussong 51
 Novak 12, 42, 49, 59

O

Oberguggenberger 70
 Oberschneider 61
 O'Connor 41, 51
 Ohta 66, 73
 Orth-Gomer 12, 45
 Ostertag 24, 78
 Oviedo 61

P

Palacios 48
 Pallesen 27
 Papachristou 33
 Pedersen 34
 Peggì 71
 Peters 28, 50
 Petrowski 42, 47
 Philbrick 44, 83
 Pintor 62
 Pletikosic 32
 Pluschke 26
 Popa 61
 Popa-Velea 35, 49, 62
 Popilean 65
 Potts 59
 Poulsen 32
 Proskurina 68
 Purucker 60

R

Rask 12, 27, 35, 68
 Rattenegger 61
 Reiner 73

Rentel 40, 65, 81
 Riessland-Seifert 63
 Rioli 64, 66, 71
 Rodriguez Hurtado 62
 Roest 52
 Rosendal 46
 Rosmalen 27
 Rossi 68
 Rothermund 30
 Rundell 24, 40, 77, 80
 Rymaszewska 12

S

Saito 71
 Salmon 19
 Sannino 69
 Sattel 31, 74
 Schäfert 43
 Scheffers 60
 Schmelzer 33, 45
 Schneekloth 33, 65
 Schröder 27, 49
 Schubert 12, 41, 50
 Schuessler 47
 Schüssler 12, 47, 58
 Schuster 64
 Schwartz 42
 Sedlar 73
 Seiler 33
 Shedden-Mora 49
 Simpson 30
 Singer 50
 Sirvinkas 71
 Sitnikova 71
 Skjernov 65
 Skovenborg 74
 Söllner 4, 12, 19, 20, 26, 35, 58, 81
 Stanculete 62
 Stanczykiewicz 64

Stein 12, 44, 70, 83
 Stiefel 12, 19, 30
 Strauss 47
 Strötz 20
 Stumpf 70
 Subic-Wrana 47
 Summergrad 26
 Susa 60
 Szalontay 62
 Szczesniak 62

T

Takacs 70
 Tarricone 32, 64, 69
 Teufel 51
 Thastum 61
 Thiessen 29
 Thorgaard 35
 Tomas-Aragones 12, 50, 60, 61
 Tominschek 63
 Toro 71
 Tøt-Strate 35
 Toussaint 31
 Trick 62
 Trifu 64
 Tritt 40, 81
 Turpin 43

U

Unützer 19, 24, 26, 30, 76

V

van der Feltz-Cornelis 57
 van der Horst 46
 van der Wouden 47
 van Dessel 46
 van Dijk 48
 van Eck van der Sluijs 74
 van Gils 49
 Van Reedt Dortland 63

Vengher 62
 Verheijen 68
 Verissimo 12
 Victor Luna 69
 Vilarroya 51
 Villadsen 61
 Vitinius 29, 33, 45, 59, 65, 66
 Vodermaier 53
 Vögele 49
 von Heymann 81

W

Wahl 52
 Wahlström 67
 Wai 71
 Waldvogel 42
 Weisblatt 35
 Weiss 33
 Wentzlaff 63
 Werneke 12, 58, 66
 White 12, 41
 Wichaidit 35
 Wilhelm 6, 26
 Wilson 30
 Wirtz 28
 Wise 12, 19
 Wu 43

Y

Yang 66
 Yoshida 48

Z

Zaudig 81
 Zhang 33, 43
 Ziemke 72
 Zimbreaan 29, 75
 Zipfel 8, 12
 Zwingmann 31



EAPM 2016

Transforming health through evidence and empathy



Welcome to Luleå and the 4th annual scientific conference of the European Association for Psychosomatic Medicine (EAPM).

Date: 16–18 June, 2016

Place: Kulturens Hus Conference Center/Clarion Hotel Sense, right in the centre of Luleå with views over the bay area.

- Take part in the latest developments in academia, research and practice of psychosomatic medicine and liaison psychiatry and enjoy the magic of the arctic midsummer light.
- Share your research and clinical experience and network with colleagues from Europe and from all over the world.
- Be inspired by world-leading experts in psychosomatic medicine and liaison psychiatry.

Norrbottnen County Council in collaboration with the European Association of Psychosomatic Medicine



Programme and registration: eapm2016.com